

# ***PDR16-PC***



***16 Channel PC Version  
Enterprise DVR***



**Pacific  
Communications**  
CLOSED CIRCUIT VIDEO SYSTEMS





## WARNING

RISK OF ELECTRIC SHOCK  
DO NOT OPEN



**WARNING:** TO REDUCE THE RISK OF ELECTRIC SHOCK,  
DO NOT REMOVE COVER (OR BACK).  
NO USER-SERVICEABLE PARTS INSIDE.  
REFER SERVICING TO QUALIFIED  
SERVICE PERSONNEL.



The lightning flash with arrowhead symbol, within an equilateral triangle, is intended to alert the user to the presence of uninsulated "dangerous voltage" within the product's enclosure that may be of sufficient magnitude to constitute a risk of electric shock.



The exclamation point within an equilateral triangle is intended to alert the user to the presence of important operating and maintenance (servicing) instructions in the literature accompanying the appliance.

### COMPLIANCE NOTICE OF FCC:

THIS EQUIPMENT HAS BEEN TESTED AND FOUND TO COMPLY WITH THE LIMITS FOR A CLASS A DIGITAL DEVICE, PURSUANT TO PART 15 OF THE FCC RULES. THESE LIMITS ARE DESIGNED TO PROVIDE REASONABLE PROTECTION AGAINST HARMFUL INTERFERENCE WHEN THE EQUIPMENT IS OPERATED IN A COMMERCIAL ENVIRONMENT. THIS EQUIPMENT GENERATES, USES, AND CAN RADIATE RADIO FREQUENCY ENERGY AND IF NOT INSTALLED AND USED IN ACCORDANCE WITH THE INSTRUCTION MANUAL, MAY CAUSE HARMFUL INTERFERENCE TO RADIO COMMUNICATIONS. OPERATION OF THIS EQUIPMENT IN A RESIDENTIAL AREA IS LIKELY TO CAUSE HARMFUL INTERFERENCE, IN WHICH CASE USERS WILL BE REQUIRED TO CORRECT THE INTERFERENCE AT THEIR OWN EXPENSE.

**WARNING:** CHANGES OR MODIFICATIONS NOT EXPRESSLY APPROVED BY THE PARTY RESPONSIBLE FOR COMPLIANCE COULD VOID THE USER'S AUTHORITY TO OPERATE THE EQUIPMENT.

THIS CLASS OF DIGITAL APPARATUS MEETS ALL REQUIREMENTS OF THE CANADIAN INTERFERENCE-CAUSING EQUIPMENT REGULATIONS.

The information in this manual is believed to be accurate as of the date of publication. Pacific Communications is not responsible for any problems resulting from the use thereof. The information contained herein is subject to change without notice. Revisions or new editions to this publication may be issued to incorporate such changes.

## Important Safeguards

### 1. Read Instructions

All the safety and operating instructions should be read before the appliance is operated.

### 2. Keep Instructions

The safety and operating instructions should be kept for future reference.

### 3. Cleaning

Unplug this equipment from the wall outlet before cleaning it. Do not use liquid aerosol cleaners. Use a damp soft cloth for cleaning.

### 4. Attachments

Never add any attachments and/or equipment without the approval of the manufacturer as such additions may result in the risk of fire, electric shock or other personal injury.

### 5. Water and/or Moisture

Do not use this equipment near water or in contact with water.

### 6. Accessories

Do not place this equipment on an unstable cart, stand or table. The equipment may fall, causing serious injury to a child or adult, and serious damage to the equipment. Wall or shelf mounting should follow the manufacturer's instructions, and should use a mounting kit approved by the manufacturer.



This equipment and cart combination should be moved with care. Quick stops, excessive force, and uneven surfaces may cause the equipment and cart combination to overturn.

### 7. Ventilation

Slots and openings in the cabinet and the back or bottom are provided for ventilation, and to ensure reliable operation of the equipment and to protect it from overheating. These openings must not be blocked or covered. Do not block these openings or allow them to be blocked by placing the equipment on a bed, sofa, rug, or bookcase. Ensure that there is adequate ventilation and that the manufacturer's instructions have been adhered to.

### 8. Power Sources

This equipment should be operated only from the type of power source indicated on the marking label. If you are not sure of the type of power, please consult your equipment dealer or local power company.

### 9. Power Cords

Operator or installer must remove power and other connections before handling the equipment.

### 10. Lightning

For added protection for this equipment during a lightning storm, or when it is left unattended and unused for long periods of time, unplug it from the wall outlet and disconnect the antenna or cable system. This will prevent damage to the equipment due to lightning and power-line surges.

### 11. Overloading

Do not overload wall outlets and extension cords as this can result in the risk of fire or electric shock.

### 12. Objects and Liquids

Never push objects of any kind through openings of this equipment as they may touch dangerous voltage points or short out parts that could result in a fire or electric shock. Never spill liquid of any kind on the equipment.

### 13. Servicing

Do not attempt to service this equipment yourself. Refer all servicing to qualified service personnel.

### 14. Damage requiring Service

Unplug this equipment from the wall outlet and refer servicing to qualified service personnel under the following conditions:

- A. When the power-supply cord or the plug has been damaged.
- B. If liquid is spilled, or objects have fallen into the equipment.
- C. If the equipment has been exposed to rain or water.
- D. If the equipment does not operate normally by following the operating instructions, adjust only those controls that are covered by the operating instructions as an improper adjustment of other controls may result in damage and will often require extensive work by a qualified technician to restore the equipment to its normal operation.
- E. If the equipment has been dropped, or the cabinet damaged.
- F. When the equipment exhibits a distinct change in performance — this indicates a need for service.

### 15. Replacement Parts

When replacement parts are required, be sure the service technician has used replacement parts specified by the manufacturer or that have the same characteristics as the original part. Unauthorized substitutions may result in fire, electric shock or other hazards.

### 16. Safety Check

Upon completion of any service or repairs to this equipment, ask the service technician to perform safety checks to determine that the equipment is in proper operating condition.

### 17. Field Installation

This installation should be made by a qualified service person and should conform to all local codes.

### 18. Telnet Communication Cable

Caution: To reduce the risk of fire, use only No. 26 AWG or larger telecommunication line cord.

19. Danger of explosion if battery is incorrectly replaced. Replace only with same or equivalent type recommended by manufacturer. Discard used batteries according to the manufacturer's instruction.

## Table of Contents

Chapter 1 — Product Information .....	1
Features .....	1
System Types .....	1
System Diagram .....	1
Front Panel .....	2
Rear Panel .....	2
Turning On the DVR.....	2
Turning Off the DVR.....	2
Chapter 2 — Tools .....	3
SmartGuard .....	3
SmartSearch .....	25
SmartBackup .....	41
SmartPager.....	46
Chapter 3 — Remote Access .....	47
Installation.....	47
POST System Setup .....	47
BASE System Setup .....	48
Appendix 1 — Accessing Windows .....	55
Appendix 2 — SmartShell.....	56
Appendix 3 — Network Setup (LAN) .....	58
Appendix 4 —6 Network Setup (Modem) .....	61
Appendix 5 — WebGuard.....	90
Appendix 6 — Protocol for Remote Controlling DVR.....	92
Appendix 7 — Time Synchronization.....	96
Appendix 8 — Text-In Query .....	98
Appendix 9 — Troubleshooting .....	100
Appendix 10 — Specifications .....	101



## Chapter 1 — Product Information

### Features

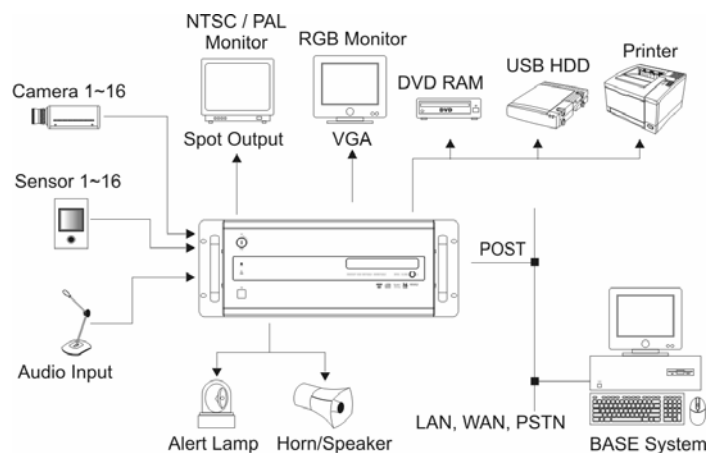
- Compatible with color cameras and other standard video sources
- Video synchronization not required
- Pentaplex operation for simultaneous recording, multi-screen viewing, playback, remote monitoring and archiving
- Versatile display formats for convenient user interface; single-screen, full-screen, quad, 3x3, 4x4, 3+4 and 2+8
- Main and Spot monitor outputs
- On-screen graphic display including camera title, location, recording status and mode display
- Sequence mode available in all screen formats
- Hardware watchdog timer function
- Programmable motion detection for each camera input using graphic user interface
- Various image enhancement functions including zoom in/out, brightness, interpolation, blur and sharpness
- Remote monitoring, playback and control through LAN, PSTN and ISDN
- User-friendly interface
- Proprietary encryption scheme preventing video from alteration
- 16-channel alarm input and 1-channel alarm output

**NOTE:** See *Appendix 10 – Specifications* for the system specifications.

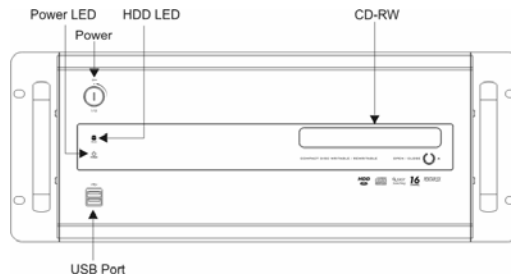
### System Types

There are two system types: POST DVR system and BASE system. The POST is a complete DVR system with cameras, and the BASE is a computer with software to access the POST DVR. The BASE can view live or previously recorded video from the POST DVR. The POST DVR can access another POST DVR when they are networked via LAN, however, it can only review previously recorded video and cannot view live video from the other POST DVR.

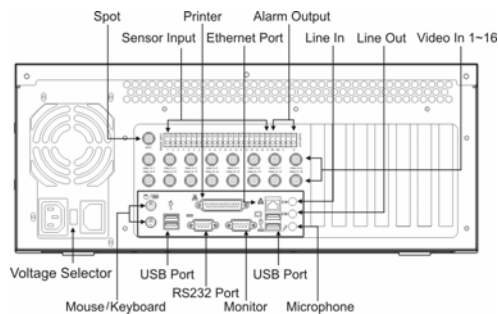
### System Diagram



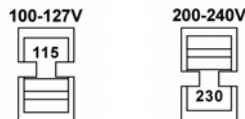
## Front Panel



## Rear Panel



**NOTE:** Check the voltage selector switch is set to an appropriate position.



## Turning On the DVR

Insert the key in the power switch and rotate it count-clockwise. The switch can be left in the ON position and the key removed. This way the DVR will power up when the ignition is turned.

**CAUTION:** The system will lock up if the monitor does not have high enough resolution. The DVR requires 1024x768 resolution.

## Turning Off the DVR

Click the Power button in the SmartGuard mode or rotate the power switch on the front panel clockwise to turn the system off.

**NOTE:** When turning off the system, you must confirm that you want to turn off the unit. You will also be asked for a user ID and password, or system quit procedure if the *Shut Down* option was selected for the user's authorization during SmartGuard setup.

## Chapter 2 — Tools

### SmartGuard

#### Overview

SmartGuard is powerful surveillance software. It provides multiplexer functions, digital time-lapse recording and event-driven recording. SmartGuard also provides motion detection, PTZ control and various image enhancement functions.

**NOTE:** The first time you turn on the system, it will immediately begin recording. If you have less than 16 cameras, you must enter the setup screen and deactivate any inputs to which cameras are not connected; otherwise, the recording speed might be decreased somewhat.

#### Features

- 16 channels
- Max.120 images/sec recording (100 images/sec PAL)
- User-friendly interface
- Scheduling by camera and time
- Time-lapse or event-driven recording
- Motion detection function
- Audio recording
- PTZ control

**NOTE:** See *Appendix 10 – Specifications* for the maximum recording speed of each model.

#### Main GUI



## Monitor



**Display Format:** Various display formats (single-screen, full-screen, quad, 3+4, 3x3, 2+8, and 4x4) are provided for convenient user interface. Each format can be selected by clicking the screen buttons shown below. The camera groups for multi-screen formats are composed of cameras 1 to 16 in order. The following camera groups are displayed on the monitor one at a time according to each display format: 1-4, 5-8, 9-12 or 13-16 in quad mode; 1-7 or 8-16 in 3+4 mode; 1-9 or 10-16 in 3x3 mode; 1-10 or 11-16 in 2+8 mode. The user can select which camera group is displayed by clicking any camera button in a group from camera buttons shown below.

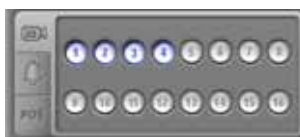


**OSD:** Information including camera title, recording mode, and recording status can be displayed on the image. Go to Setting Up the System in the SmartGuard Setup section, and place a check in the Show OSD box to display the OSD information.

## Camera



Click the individual camera buttons to display the selected camera.



## Alarm



Clicking the alarm icon button causes the alarm control buttons to display as shown below. The user can check the alarm status and control the alarm output. Pressed alarm button is active mode, and released button is inactive mode. The user can active or inactive alarm output manually by clicking the button when it is released or pressed. If the user disables the alarm during the Alarm setup on the SmartGuard, the alarm button will be disabled.



## POS

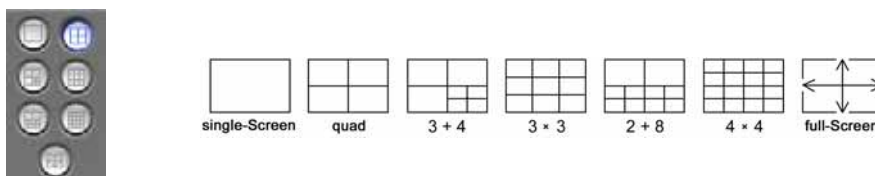


Clicking the POS icon button causes the POS control buttons to display as shown below. The system status window will display the POS data. Click the right mouse button on the window to toggle two display modes: POS data display mode, and event log including POS data display mode. The POS button LED will be lit while the data is coming from the POS. If you do not want to display the data from the POS, release the target POS number button. If the user disables the POS device during the Text-In setup on the SmartGuard, the POS button will be disabled.



**NOTE:** Installing the KeyLock to the USB port on the rear panel of the DVR is required for operating the POS system. Ask your dealer or installer for details.

## Screen Buttons



Click the desired screen mode buttons.

- To view a specific image in the single-screen mode, move the cursor to that image and double click the left mouse button.
- To return to the previous screen mode from the single-screen mode, click the left mouse button in the window.
- To enter the full-screen, click the far right button. All of the control buttons disappear, and the monitoring window takes up the full screen in the full-screen display mode.
- To return from full-screen mode, click the left mouse button anywhere on the monitor.

## System Status



**Mode Status:** There are two operating modes – View only mode and Recording mode. The SmartGuard records images only in the Recording mode.



**HDD Indicator:** Shows the remaining hard disk space and the type of hard disk usage. Go to Setting Up the System in the Setup section, and select between Once and Recycle for HDD usage.

**NOTE:** *Once* (displayed as *Disk available: \*\*%*) records until the hard disk is full and then stops. *Recycle* (displayed as *Repeat Recording*) records over the oldest images when the hard disk is full.



**Event Logging:** To scroll up and down the list, hold down the left mouse button on the list and move the cursor up and down, or roll the mouse wheel on the list.

## Clock Mode

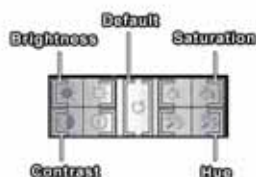


Click the left mouse button on the clock area to set date display (MM-DD-YYYY/...) and time display (12 Hours/24 Hours) formats. Click the right mouse button on the clock area to set date, time and time zone.

**CAUTION:** If you change the time, images dated later than the new date/time are deleted. Back up the images if you want to save them.

## Image Adjust

You can adjust the brightness, contrast, hue and saturation by clicking the designated buttons. Click the Default button to reset them to the default settings.



**NOTE:** These adjustments should not be used to correct improperly set cameras or monitors.

## PTZ Control

Displays PTZ control buttons. The DVR provides transmission functions, and you can control popular PTZ devices and dome cameras.

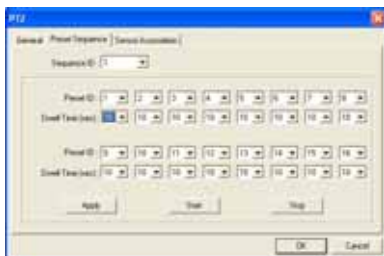


**NOTE:** If you want to set up the advanced PTZ control, place the cursor on the PTZ control panel, and click the right mouse button. Make sure that the PTZ camera to set up supports advanced PTZ control functions first.



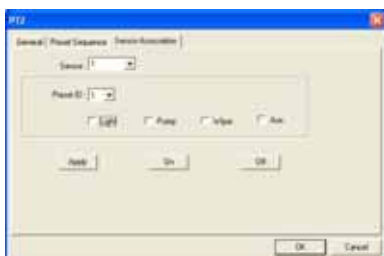
### General tab

- **Speed:** Set the pan/tilt speed (from 1 to 16). The higher the number, the faster it moves.
- **Move to origin:** Click the button if you want to move the camera to the origin position.
- **Auto Panning:** Enables or disables auto panning.
- **Camera:** Turns on or turns off the camera.
- **Menu:** Enables or disables the menu function.
- **Pump / Wiper / Light / Aux:** Enables or disables pump, wiper, light and other available functions.



### Preset Sequence tab

- **Sequence ID:** Select the sequence ID (from 1 to 4).
- **Preset ID:** Select the preset ID (from 1 to 16).
- **Dwell Time:** Set the sequence dwell time (from 3 to 15 seconds) for each preset ID.
- **Apply:** Adjusts the current settings.
- **Start:** Starts the camera sequence. If you click the Start button, the camera will tour to the preset position during the preset dwell time by turns.
- **Stop:** Stops the camera sequence.



### Sensor Association

- **Sensor:** Select sensor to associate it with the camera.
- **Preset ID:** Select the preset ID (from 1 to 16).
- **Light / Pump / Wiper / Aux:** Check the box if you want to use the light, pump, wiper and/or other available functions when the associated sensor is activated.
- **Apply:** Applies the changes.
- **On:** Enables the sensor association. If you enable the sensor association, the camera will move to the preset position, and pump, wiper light and/or other available functions will be initiated when the associated sensor is activated.
- **Off:** Disables the sensor association.

## Utility Buttons



Accessing SmartSearch: Click the button to run the SmartSearch.

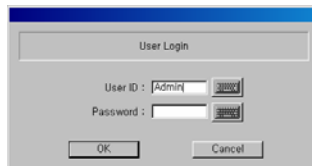


**Power Button:** Click the button to quit or log out the system.

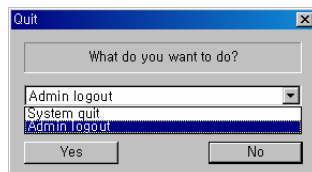
**NOTE:** If you click the *Power* button, the *Quit* dialog box appears. Select *System quit* to quit the program or select *logout* to log out the system.

Click any function button on the main GUI of SmartGuard after logging out, the following *User Login* dialog box appears. Enter the *User ID* and *Password* and then click the *OK* button if you want to log in the system.

**NOTE:** When *No local login* is selected during SmartGuard – Authority setup, the DVR does not ask login procedure.



Click the **Power** button on the main GUI of SmartGuard under login, the following *Quit* dialog box appears. Select *logout* and then click the *Yes* button if you want to log out the system.



**Manual Alarm Output:** In general, the alarm is activated automatically when any related sensor is activated. However, the user can activate alarm output manually by clicking the button while it is released or deactivate an alarm output by clicking the button when it is pressed.



**Auto Sequencing:** When this button is clicked, the SmartGuard sequences the cameras in order. Whenever you click the button, it toggles between On and Off. The switching interval can be set during the system setup.



**Mode Selection:** The record mode is selected when this button is clicked. SmartGuard returns to view only mode automatically when it is unable to record (for example, when the hard disk is full).

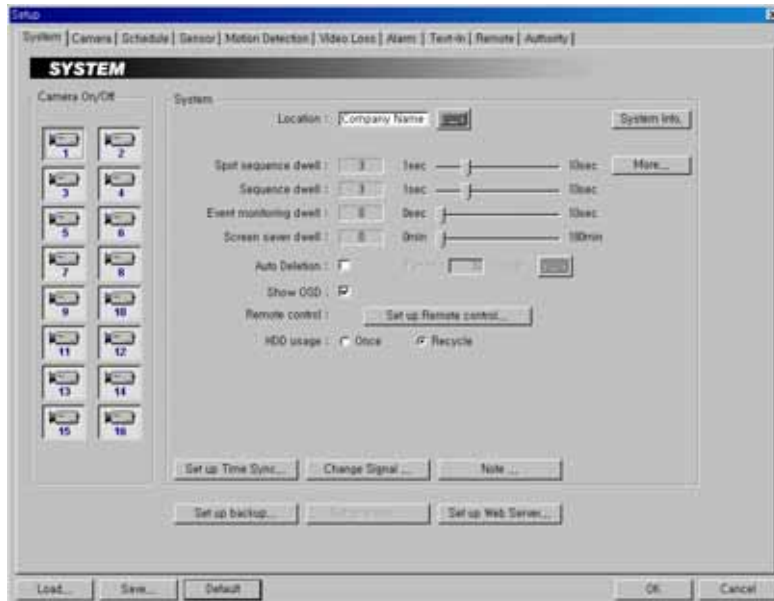
**NOTE:** The DVR records only in accordance with the recording schedule, which can be set during the system setup. Before you install the DVR, you need to fully understand the recording schedule. Note also that clicking this record button only prepares the DVR for recording. In this state, the DVR will follow the recording schedule.




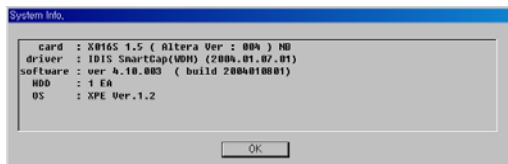
**Setup:** When this button is clicked, a dialog box appears. The dialog box has nine tabs. See the following SmartGuard Setup section.

## SmartGuard Setup

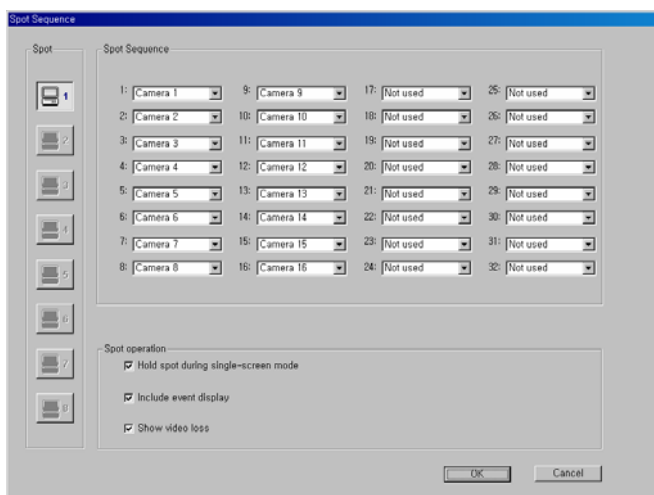
### Setting Up the System



1. Click the Camera icon to enable the camera. 
2. Click the System Info... button, and the System Information dialog box appears. The dialog box displays the information of the installed card, driver, software, hard disk drive, and OS on the system.



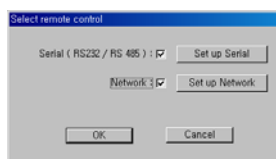
3. Click the text field beside Location. If you have a keyboard attached to your unit, enter a location name such as "Main Office". If you do not have a keyboard connected to the unit, clicking the keyboard icon will display a virtual keyboard on which you can type by clicking the letters.
4. Move to Spot sequence dwell, and set the sequence dwell time for the Spot monitor by holding down and dragging the pointer. You can set the dwell time from 1 to 10 seconds. If you set the value to 3 seconds, the camera display will sequence every three seconds on the Spot monitor.
5. Click the More... button, and set up the spot sequence in detail.



6. Move to each number (1-32), and select the camera number to sequence from a drop-down list (from Camera 1 to Camera 16 and Not used).
7. Move to Hold spot during single-screen mode, and check the box if you do not want the cameras sequence on the Spot monitor while the main monitor is set to the single-screen display mode.
8. Move to Include event display, and check the box if you want to display the event-detected video during spot sequence.
9. Move to Show video loss, and check the box if you want to show the video loss image during spot sequence.
10. Move to Sequence dwell, and set the sequence dwell time (from 1 to 10 seconds) for the main monitor by holding down and dragging the pointer. If you set the value to 3 seconds for the Sequence dwell, the camera display will sequence every three seconds on the Main monitor.
11. Move to Event monitoring dwell, and set the monitoring dwell time (from 0 to 10 seconds) for the event-driven image by holding down and dragging the pointer. If you set the value to 3 seconds for the Event monitoring dwell, the camera with an event will display in the one-screen mode for three seconds on the main monitor any time an event (alarm input or motion detection) occurs. Set the value to 0 seconds if you do not want the event-driven camera to be displayed in the one-screen mode.
12. Move to Screen saver dwell, and set the screen saver dwell time (from 0 to 180 minutes) for the display image. The screen saver will be activated if there is no keyboard or mouse operation during the preset dwell time.
13. Move to Auto Deletion, and check the box if you want to delete the video recorded earlier than user-defined period. When checking the Auto deletion box, move to Period and set the period to keep the recorded video. e.g. If you check the Auto deletion box, and set 30 days in the Period box, the DVR will automatically delete the video which is older than 30 days from the current day.
14. Move to Show OSD, and check the box if you want to display OSD information on the image. OSD information includes camera title, recording mode and recording status.

**NOTE:** An *R* indicates the target camera is in the *Time-lapse* recording schedule mode. An *S* indicates it is in the *Event-driven* recording mode. An *RS* indicates it is in the *Time & Event* recording mode. An *R* located at the bottom-right corner indicates the DVR is recording video, and the blink rate of the *R* relates to the recording speed.

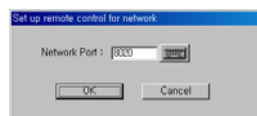
15. Move to Remote control, and click the Set up Remote control... button when the DVR is controlled remotely using the serial communication signals or network connections.



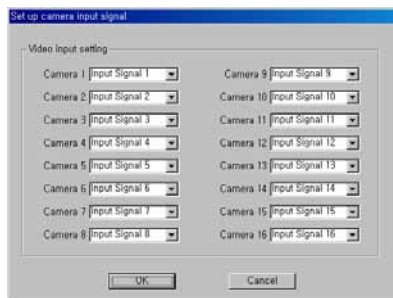
16. Move to **Serial (RS232 / RS485)**, and check the box and click the **Set up Serial** when the DVR is controlled remotely using the serial communication signals. Select the DVR's COM port to use from the drop-down list. Click the **Set up port...** button, and set the **Baud rate** from 300 to 256,000. Select **Parity** from **None**, **Even** or **Odd** parity. Select **Data bit** from 7 bit or 8 bit format. Select **Stop bit** from 1 bit or 2 bits from the drop-down list. Move to **Device ID**, and set the device ID number from 0 to 127 using the slide bar. See Appendix 6 – Protocol for Remote Controlling DVR for details.



17. Move to **Network**, and check the box and click the **Set up Network** when the DVR is controlled remotely using the network connections. Enter the **Network Port** number.



18. Move to **HDD usage**, and select either **Once** or **Recycle**. When **Once** is selected, the DVR stops recording when the hard disk drive is full. When **Recycle** is selected, the DVR continues recording when the hard disk drive is full by overwriting the oldest video.
19. Click the **Set up Time Sync...** button, and set up the time synchronization if required. See Appendix 7 – Time Synchronization for details.
20. Click the **Change Signal...** button, and set the camera input signal to each camera number.



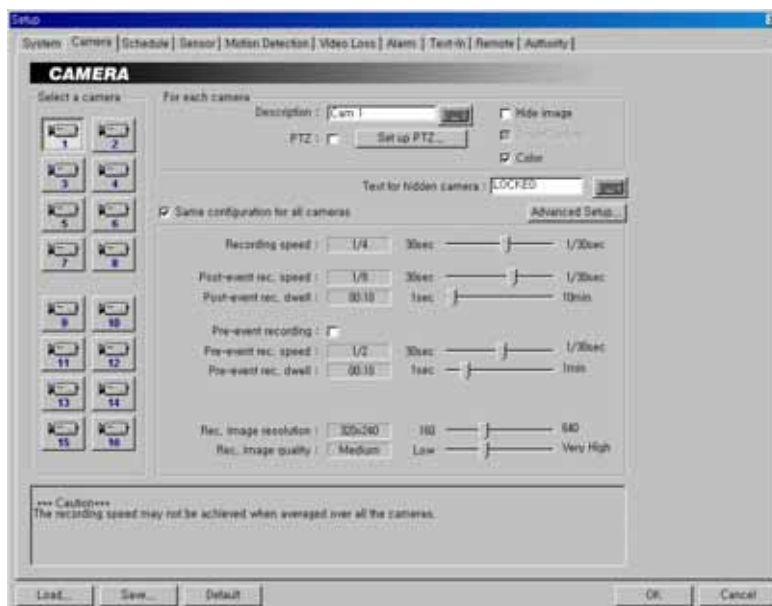
21. Click the **Note...** button, and set up the note function. The user can add or delete notes. If you want to read the note, select the line and click the **View** button. Click the **Load** button to load the saved note, the **Save** button to save the current note, and the **Text Save** button to save the current note to the text file.
22. Click the **Set up backup...** button, and set up backup information. See the **SmartBackup** section.
23. Click the **Set up pager...** button, and set up pager information. See the **SmartPager** section.

**NOTE:** The *Set up pager...* button will be activated if you set up SmartPager to start in the SmartGuard setup.


24. Click the **Set up Web Server...** button, and set up an IIS(Internet Information Services) for the WebGuard program.
25. Click the **Load...** button if you want to load typical settings. Click the **Save...** button if you want to save settings. Click the **Default** button if you want to load default settings. You can save your changes by clicking the **OK** button. Selecting **Cancel** exits the dialog box without saving the changes.

**NOTE:** Only the administrator level user can use the Load, Save and Default buttons.

## Setting Up Cameras



**CAUTION:** The recording speed may not be achieved when averaged over all the cameras.

1. Click the Camera icon. 
2. Click the text field beside **Description**, and enter a camera title such as "Front Door". You can use either the actual keyboard or the virtual keyboard.
3. Move to **PTZ**, and check the box to enable pan, tilt and zoom functions.

**NOTE:** To control camera pan, tilt and zoom, you must attach a compatible RX device or dome camera to the DVR. A list of supported RX devices and dome camera models can be found in the *Set up PTZ* dialog box. When controlling a PTZ camera via RS485, an additional RS232 to RS485 converter is required.

4. Click the **Set up PTZ...** button to display the *Set up PTZ* dialog box. Select the model of the installed RX device or dome camera from the Model list, and the COM port to use from the drop-down list. Click the **Set up port...** button to display the *Set up COM port* dialog box. Set the **Baud rate** from 300 to 256,000, select the **Parity** from None, Even or Odd parity, select the **Data bit** from 7 bit or 8 bit format, select the **Stop bit** from 1 bit or 2 bits from the drop-down list. Move to **Device ID**, and set the device ID number from 0 to 31 using the slide bar. You can save your changes by clicking the **OK** button. Selecting **Cancel** exits the dialog box without saving the changes.
5. Move to **Hide image**, and check the box to hide the image of the selected camera on the monitor. If this box is checked, the selected camera will not be displayed on the monitor, however, the images from the camera will be recorded while in the record mode.
6. Click the text field beside **Text for hidden camera**, and enter the text to be displayed on the hidden camera using the actual keyboard or the virtual keyboard. If you leave this box empty, the gray screen without any text will be displayed for the hidden camera.
7. Move to **SmartCapture**, and check the box to use the SmartCapture technique.

**NOTE:** The DVR captures the images very quickly using a unique technique called SmartCapture. However, it is possible that some PAL cameras will have shaky images when using this program. Do not check this box if your cameras have shaky images.

8. Move to **Color**, and check the box when using a color camera. When using a B&W camera, make certain the box is not checked. This will reduce noise, giving better recorded image quality.
9. Move to **Same configuration for all cameras**, and check the box to set all cameras with same configuration. If this box is checked, the same configurations from the **Recording speed** to **Rec. image quality** will be set for all cameras at one time.
10. Move to **Recording speed**, and set the recording speed for the time-lapse mode by holding down and dragging the pointer. You can set the speed from 30 to 1/30 seconds. The value of the recording speed is the time to record one image. Therefore the lower the value, the more images are recorded during the same time. For example: 30 means one image per 30 seconds will be recorded, 1 means one image per second, and 1/30 means that 30 images per second.

**NOTE:** The DVR has a maximum recording speed of 120 images per second (100 images for PAL), and this maximum recording speed can be decreased when using more than four cameras.

11. Move to **Post-event rec. speed**, and set the recording speed (from 30 to 1/30 seconds) for the event-driven mode by holding down and dragging the pointer.
12. Move to **Post-event rec. dwell**, and set the duration (from 1 second to 10 minutes) of event-driven recording by holding down and dragging the pointer.
13. Move to **Pre-event recording**, and check the box to enable the pre-alarm recording.
14. Move to **Pre-event rec. speed**, and set the recording speed (from 30 to 1/30 seconds) for the pre-alarm mode by holding down and dragging the pointer.
15. Move to **Pre-event rec. dwell**, and set the duration (from 1 second to 1 minute) of pre-alarm recording by holding down and dragging the pointer.
16. Move to **Rec. image resolution**, and set the record image size recorded by holding down and dragging the pointer. You can select the resolution from 160x120, 320x240, 640x240 or 640x480.

**NOTE:** Higher resolution images require more storage space and will reduce the recording capacity of the hard disk drive. When set to **640x480**, video with lots of motion may have some artifacts.

17. Move to **Rec. image quality**, and set the record image quality by holding down and dragging the pointer. You can select the resolution from **Low**, **Medium**, **High** or **Very High**.

**NOTE:** Higher quality images require more storage space and will reduce the recording capacity of the hard disk drive.

**NOTE:** The maximum record image size and quality of pre-alarm recording will be restricted to **320x240** and **Medium** regardless of setting values of *Rec. image resolution* and *Rec. image quality* in order to maximize the amount of pre-alarm video to be stored.

18. Click **Advanced Setup...** to select an advanced camera setup. In addition to the normal camera setup established in steps 10 to 17, the DVR provides additional camera configurations for the following situations: **After hour**, **On alarm**, and **On Priority alarm**.

**NOTE:** *After hour* – The DVR follows an advanced setup during the time outside the hours established as the Work hours. *On alarm* – The DVR follows an advanced setup during alarm activation. *On Priority alarm* – The DVR follows an advanced setup during high-priority alarm activation. High priority alarms are configured in the sensor/motion detection setup. See the *Setting Up Sensors* and *Setting Up Motion Detection* sections for setting up the priority alarm.



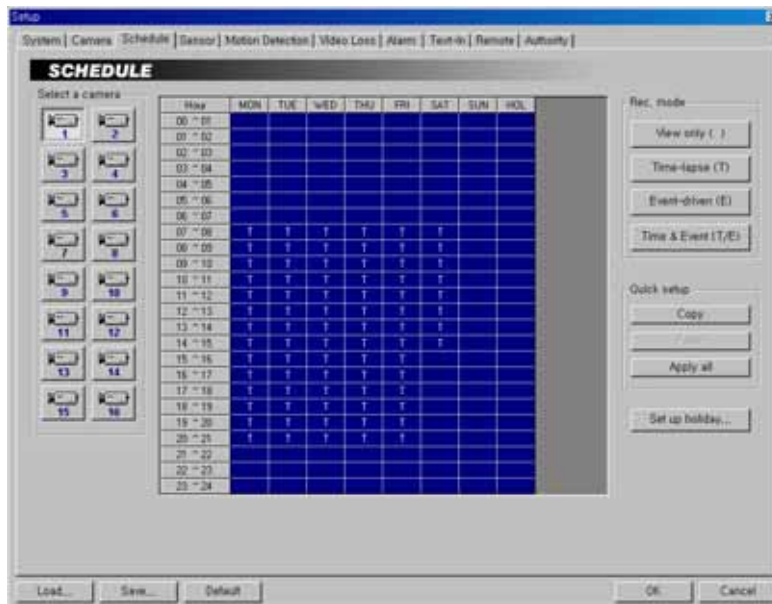
19. Move to From and To under Work hour, and set the start and end time of working hours by holding down and dragging the pointer.


**NOTE:** *Work hour* set in this menu is applied to the normal camera setup established in steps 10 to 17, and all hours except the Work hours will be *After hour*.

20. Move to *After hour*, and check the box if you want to use an advanced setup during the hours outside hours established in Work hour. Then, set the Recording speed, Rec. image resolution and Rec. image quality by holding down and dragging the pointer. Refer to the steps 10 to 17 for the available values for each setting.
21. Move to *On alarm*, and check the box if you want to use an advanced setup during alarm activation. Then, set the Rec. image resolution and Rec. image quality by holding down and dragging the pointer. Refer to the steps 10 to 17 for the available values for each setting.
22. Move to *On Priority alarm*, and check the box if you want to use an advanced setup during high-priority alarm activation. Then, set the Recording speed, Rec. image resolution and Rec. image quality by holding down and dragging the pointer. Refer to the steps 10 to 17 for the available values for each setting.
23. You can save your changes by clicking the OK button. Selecting Cancel exits the Advanced camera setup dialog box without saving the changes.

**NOTE:** The configuration of the Advanced camera setup is also set for all cameras when the *Same configuration for all cameras* is selected.

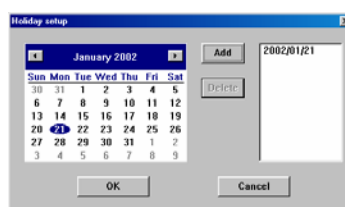
## Setting Up Schedules



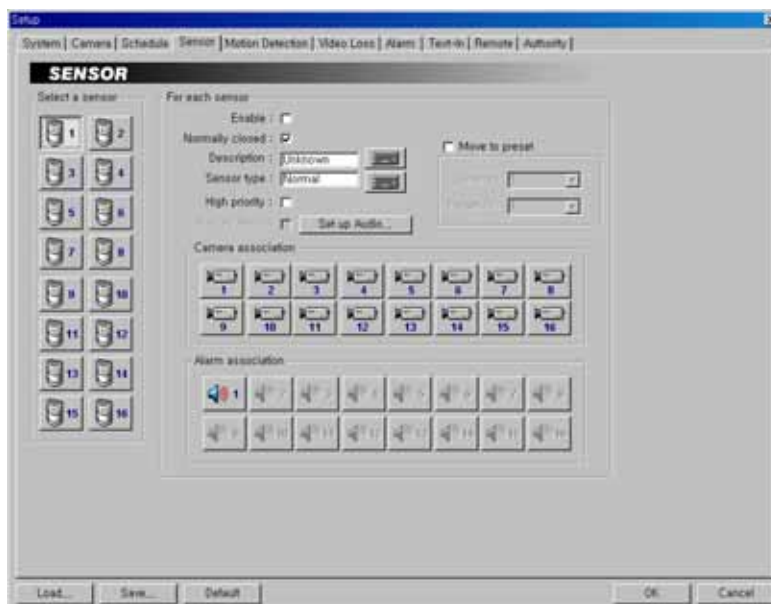
1. Click the Camera icon. 
2. Move to the hour table, and set the recording schedule for each day (MON to SUN) and holidays (HOL). Select the hours to record by holding down on the recording start time and dragging to recording finish time. The hour selection will be made through both hours and days. The cells you select will be filled in blue.
3. Click the desired recording mode button under the Rec. mode. The recording modes are: View only (blank), Time-lapse (T), Event-driven (E) or Time & Event (T/E). If you click the Time-lapse button, a T will display in the selected cells. Nothing displays when selecting View only.


**NOTE:** The DVR provides four different recording modes. *View only mode* — No recording will be made during selected hours. *Time-lapse mode* — Time-lapse recording will be made during selected hours. *Event mode* — Event-driven recording will be made during selected hours. *Time & Event mode* — Time-lapse recording will be made during selected hours and the DVR will go into the event-driven recording mode during selected hours when an event occurs.

4. Use the Quick setup to adjust the current settings of the selected camera to another camera. Click the Copy button, and select another camera to be scheduled by clicking the camera icon in the same dialog box, and then click the Paste button.
5. Click the Apply all button if you want to adjust the current settings to all cameras.
6. Click the Set up holiday... button to set up holidays. This function compensates for different holidays in different countries. Click the date in the calendar you want as a holiday, and click the Add button. The selected date will be displayed in the list next to the calendar. If you want to delete a holiday, click the Delete button after selecting the date in the list. Move to other months using the arrow buttons located at the top of the calendar. You can save your changes by clicking the OK button. Selecting Cancel exits the Holiday setup dialog box without saving the changes.



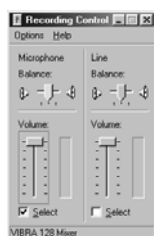
## Setting Up Sensors



1. Click the **Sensor** icon. 
2. Move to **Enable**, and check the box to enable the selected sensor.
3. Move to **Normally closed**, and set the sensor type to Normally closed (NC) or Normally open (NO). If this box is checked, it is in the normally closed mode. If it is not checked, it is in the normally open mode.
4. Click the text field beside **Description**, and enter a sensor title such as "Front Door". You can use either the actual keyboard or the virtual keyboard.
5. Click the text field beside **Sensor type**, and enter a sensor type such as "magnet". You can use either the actual keyboard or the virtual keyboard.
6. Move to **High priority**, and check the box to give high priority to the target sensor so the DVR will follow the advanced camera setup when the target sensor is activated. See the **Setting Up Cameras** for configuring advanced camera setup.
7. Move to **Record Audio**, and check the box to record audio when a selected sensor is activated. Recording audio will be activated when at least one camera is associated with the sensor and the DVR is recording video. When checking the **Record Audio** box, click the **Set up Audio...** button. Select an audio input type from Microphone or Line-in, and set its balance and volume in the **Recording Control** dialog box.

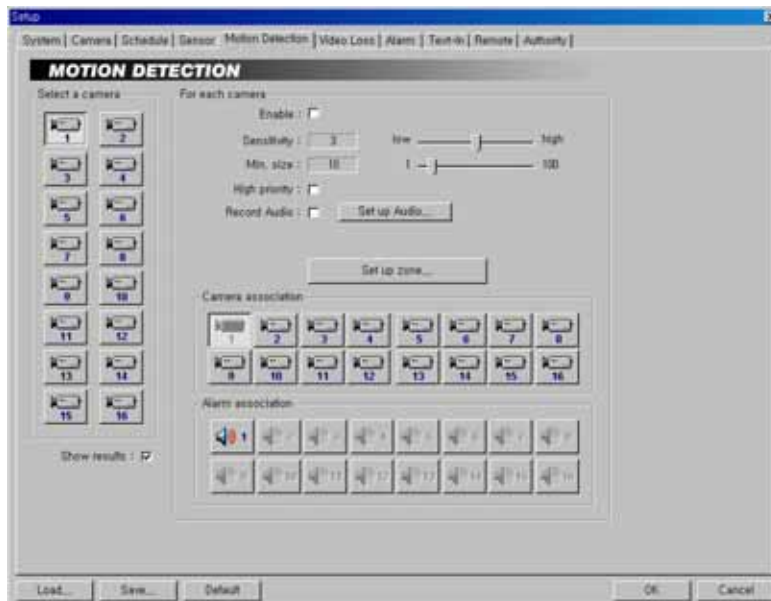
**NOTE:** The sound card provides two types of audio input, Microphone and Line-in. Microphone is for an unamplified source while Line-in is for an amplified source. You must manually select the type of input.

**NOTE:** The voltages generated by microphones are very much smaller than those used in line level devices. If you were to plug a Microphone into the soundcard Line in, you would never record anything.



8. Move to **Move to preset**, and check the box to move the target camera to the preset location when a selected sensor is activated. Select the camera and preset ID from a drop-down list.
9. Move to **Camera association**, and click the camera icon to associate it with a selected sensor. Up to 16 cameras can be selected. Video from associated camera(s) will be recorded when a related sensor is activated.
10. Move to **Alarm association**, and click the alarm icon to be associated with a selected sensor. The alarm will go off when a related sensor is activated.

## Setting Up the Motion Detection

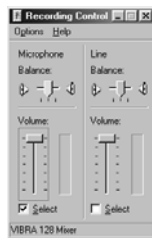


1. Click the **Camera icon**.
2. Move to **Enable**, and check the box to enable motion detection for the selected camera.
3. Move to **Sensitivity**, and set the motion detection sensitivity (1 to 5) by holding down and dragging the pointer.

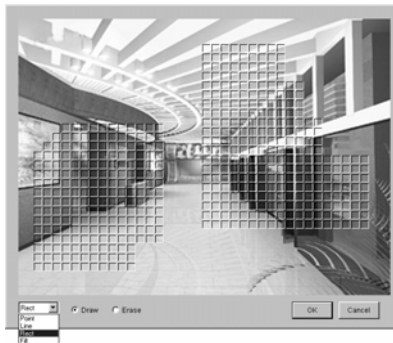
**NOTE:** The higher the number, the more sensitive it is. You can check that the sensitivity is set correctly by watching detection results on the images. See the step 9.

4. Move to **Min. size**, and set the minimum number of blocks (1 to 100). If you set the Min. size value to 10, the DVR will only react to motion when it detects changes (activity) in at least 10 connected blocks within the selected zone established in step 7.
5. Move to **High priority**, and check the box to give high priority to the target camera. The DVR will follow the advanced camera setup when the target camera detects motion. See the **Setting Up Cameras** for configuring advanced camera setup.
6. Move to **Record Audio**, and check the box to record audio when a selected camera detects motion. Recording audio will be activated when the DVR is recording video. When checking the **Record Audio** box, click the **Set up Audio...** button. Select an audio input type from **Microphone** or **Line-in**, and set its balance and volume in the **Recording Control** dialog box.

**NOTE:** The sound card provides two types of audio input, **Microphone** and **Line-in**. **Microphone** is for an unamplified source while **Line-in** is for an amplified source. You must manually select the recording input type.



7. Click the **Set up zone...** button, and a zone setup window appears.

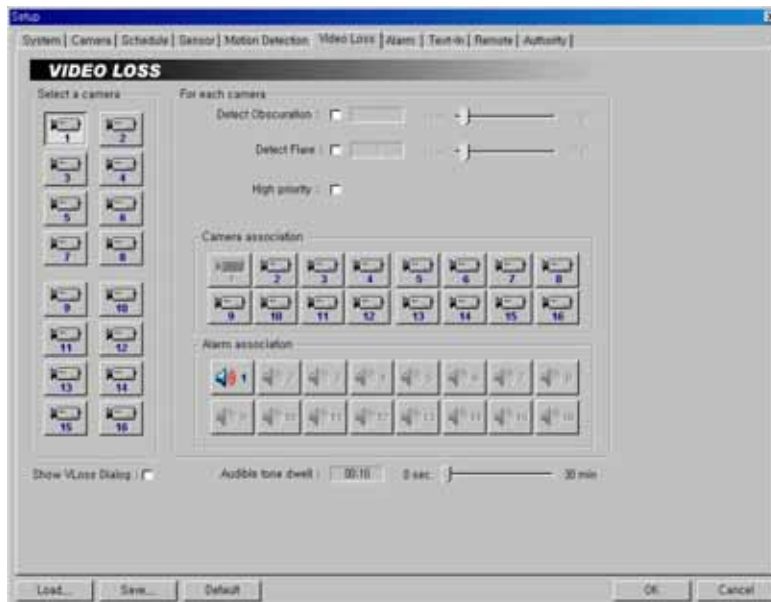



8. The setup screen is made up of a 30x40 grid. First, click the **Draw** radio button and select a tool to use from the drop-down list, and then set up the detection zone on the image. You can save your changes by clicking the **OK** button. Selecting **Cancel** exits the dialog box without saving the changes. Use the tools as follows:  
**Point** — Place the cursor on the image and click the left mouse button. A single box appears where the cursor is.  
**Line** — This tool can be used to draw irregular shapes. Place the cursor where you want to start the line. Hold down the left mouse button and drag the cursor to where you want the end of the line. Release the mouse button and a group of boxes appears along the line you drew. You can draw lines around shapes by repeating this process.  
**Rectangle** — Hold down the left mouse button and drag the cursor in any direction. A rectangle appears. Once the rectangle is the size you want, release the mouse button and the rectangle fills with boxes.  
**Fill** — When using the fill tool, clicking the mouse will fill that area of the image with boxes. If a shape has been drawn with the line tool, clicking inside will fill the area with boxes. Clicking outside the area will fill the outer area with boxes. If no shapes have been drawn, the entire screen will fill with boxes.

**NOTE:** When you select the *Erase*, you can use the tools as described above to delete boxes.

9. Move to **Show results**, and check the box to show detection results on the monitoring image. You can also check that sensitivity and minimum size are set correctly using this feature.
10. Move to **Camera association**, and click the camera icon to associate it with the camera selected step 1. If motion is detected by one camera, other cameras can be associated with it so that video will also be recorded from the associated cameras.
11. Move to **Alarm association**, and click the alarm icon to associate it with a selected sensor. The alarm will go off when an associated sensor is activated.

## Setting Up the Video Loss



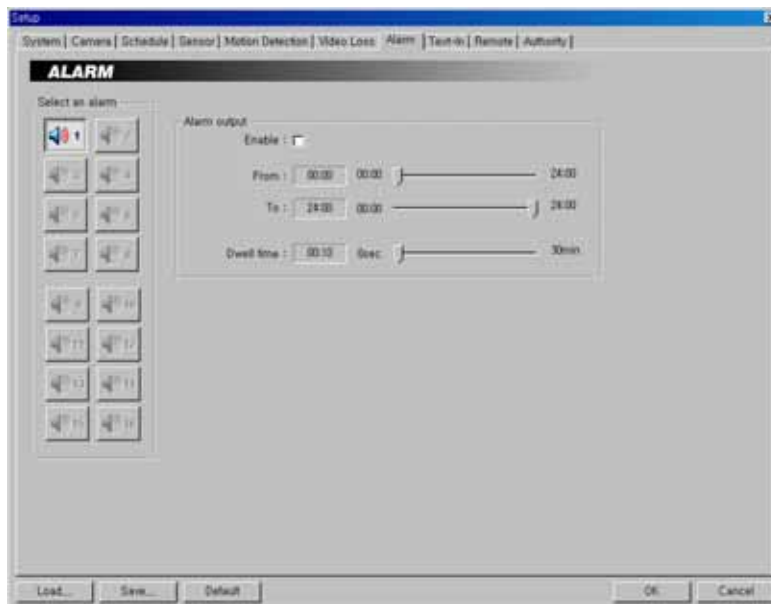
1. Click the Camera icon. 
2. Move to **Detect Obscuration**, and check the box to use the obscuration detection. And then set the obscuration level from 0% to 50% by holding down and dragging the pointer. The higher the percentage, the more sensitive it is. If the obscuration detection is selected, the DVR will check the brightness of the target camera, and consider the obscuration on the images as video loss.
3. Move to **Detect Flare**, and check the box to use the flare detection. And then set the flare level from 0% to 50% by holding down and dragging the pointer. If the flare detection is selected, the DVR will check the brightness of the target camera, and consider the flare on the image as video loss.
4. Move to **High priority**, and check the box to give high priority to the target camera. The DVR will follow the advanced camera setup when the target camera detects video loss. See the **Setting Up Cameras** for configuring advanced camera setup.
5. Move to **Camera association**, and click the camera icon to associate it with the camera selected step 1. If video loss is detected by one camera, other cameras can be associated with it so that video will also be recorded from the associated cameras.
6. Move to **Alarm association**, and click the alarm icon to associate it with a selected sensor. The alarm will go off when an associated sensor is activated.
7. Move to **Show video loss dialog**, and check the box if you want to show the following **Video Signal Failure** dialog box on the screen when the video loss is detected. Click the **Acknowledge** or **Acknowledge All** button to close the dialog box.




8. Move to Audible tone dwell, and set the dwell time of alarm output from 0 to 30 minutes. The alarm output will be activated during the preset dwell time when the video loss is detected.

**NOTE:** The alarm output can be reset during alarm activation only by clicking the *Acknowledge* or *Acknowledge All* button in the *Video Signal Failure* dialog box.

## Setting Up the Alarm

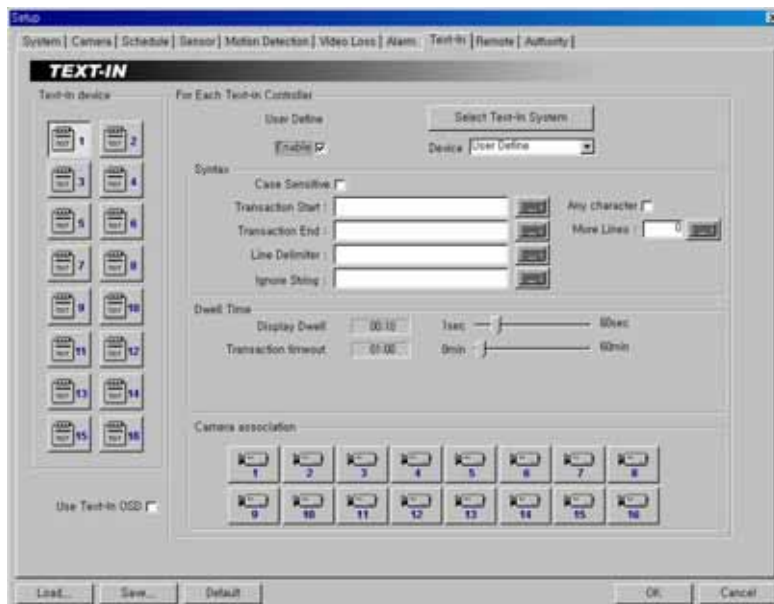



1. Click the Alarm icon. 
2. Move to **Enable**, and check the box to enable the selected alarm.
3. Move to **From** and **To**, and set the beginning and ending time (00:00 to 24:00) of alarm activation by holding down and dragging the pointer.

**NOTE:** In cases where the *From* hour is later than the *To* hour, the alarm will be activated at the *From* time of the current date until next day's *To* time. If you set *To*: 08:00 and *From*: 18:00, this means the alarm will be active over night from 6:00 p.m. until 8:00 a.m. the following day.

4. Move to **Dwell time**, and set the alarm output duration (0 seconds to 30 minutes) by holding down and dragging the pointer.

## Setting Up the Text-In (Text-In version only)



1. Click the Text-in device icon .
2. Move to **Enable**, and check the box to enable to use the selected text input device.
3. Move to **Use Text-In OSD**, and check the box if you want to display text-in information on the image.
4. Click the **Select Text-In System** button to set up the text-in device. Select the model of installed text-in system from the **Text-In Model** list, and the COM port to use from the drop-down list. Click the **Set up port...** button to display the **Set up COM Port** dialog box. Set the **Baud rate** from 300 to 256,000, select the **Parity** from **None**, **Even** or **Odd** parity, select the **Data bit** from 7 bit or 8 bit format, select the **Stop bit** from 1 bit or 2 bits from the drop-down list. You can save your changes by clicking the **OK** button. Selecting **Cancel** exits the dialog box without saving the changes.
5. Move to **Device**, and select the type of text-in device to use.

**NOTE:** Each type of text-in device (User Define, PUMP, POS, and so on) has different setup options which can be defined by the user.

6. Move to **Case Sensitive**, and check the box to distinguish between capital letters and small letters from text-in data.
7. Move to **Transaction Start**, and enter the character string to be considered as transaction start. If the **Any character** box is checked, preset any character will be considered as transaction start.
8. Move to **Transaction End**, and enter the character string to be considered as transaction end.

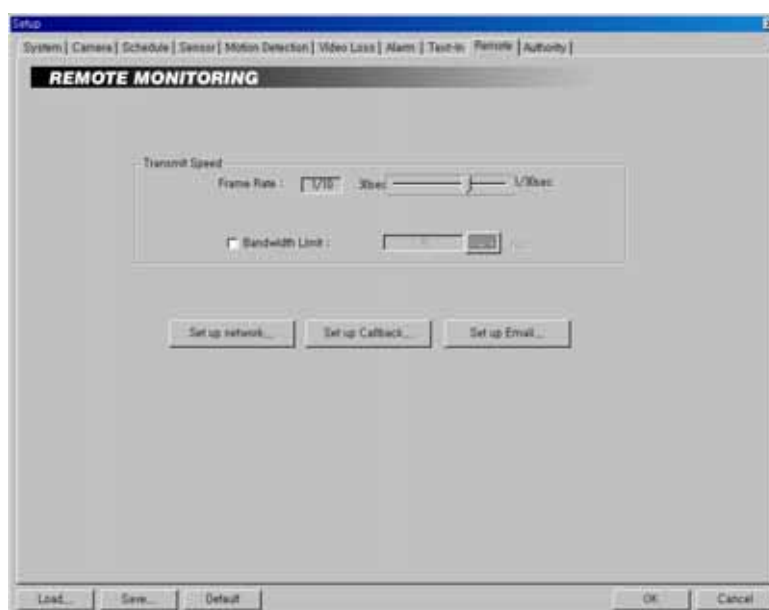
**NOTE:** Entering multiple keywords for *Transaction Start / End* are supported. Use a semi-colon (;) to delimit each keyword. When the semi-colon is included in *Transaction Start / End* itself, use a double semi-colon (;:).

9. Move to **More Lines**, and set the line count after preset character string for transaction end. The DVR will include preset line count in one transaction.
10. Move to **Line Delimiter**, and enter the character string that divides each text-in line.
11. Move to **Ignore String**, and enter the character string. The DVR will ignore the text-in line including the string which is set in this field.
12. Move to **Display Dwell**, and set the dwell time to display the text-in information by holding down and dragging the pointer. You can set the dwell from 1 to 60 seconds.

**NOTE:** The DVR will record images only during the display dwell time for text-in event.

13. Move to **Transaction Timeout**, and set the duration to wait for a new text input. The DVR will consider the transaction is ended if there is no text input during preset timeout after the last text input. You can set the timeout duration from 0 to 60 minutes.
14. Move to **Camera association**, and click the camera icon to be associated with a selected text-in device. Multiple cameras can be selected. The text-in information will be displayed on the screen when the associated camera is displayed in the single-screen mode.

## Setting Up the Remote Access



1. Move to **Transmit speed**, and set the frame rate (from 30 to 1/30 seconds) by holding down and dragging the pointer.

**NOTE:** The transmit speed is the number of images that can be transmitted for each camera. Therefore the lower the value, the more images are transferred during the same time. For example, when using one camera, the value 30 means one image per 30 seconds will be transmitted. 1 means one image per second, and 1/30 means that 30 images per second. The maximum transmit speed users can expect over a LAN is 120 images per second. This means that if you have four cameras, they can all be set at 1/30 (30 images per second), and you will not exceed the system's capability. However, even if the total image rate settings for all cameras exceed 120 images per second, the system cannot transmit more than 120 images per second. When this happens, the cameras will share the 120 images per second capacity (4x16 models only).

**NOTE:** Maximum transmit speed users can expect over a LAN is 120 images per second, and average transmit speed over PSTN is 1 to 2 images per second.

**NOTE:** If the VGA card of a BASE system does not support the overlay function, the transmit speed can slow down somewhat.

2. Move to **Bandwidth Limit**, and check the box to control the network bandwidth. And then enter the bandwidth limit (kbps) using either actual keyboard or the virtual keyboard.
3. Click the **Set up network...** button, and set up the network. See Appendix 3 – Network Setup (LAN) or Appendix 4 – Network Setup (Modem) for details.

4. Click the **Set up Callback...** button, and set up the callback function. The DVR can be set up to notify the target server running the SmartBase when certain events occur.



5. Move to **Use Callback**, and check the box to enable the callback function.

**NOTE:** When using the callback function with modem connections, check the *Use Modem* box and then select the installed modem to use. Also, the dial-up server should be running on the target server to be notified. See *Appendix 4 – Network Sestup (Modem)* for details.

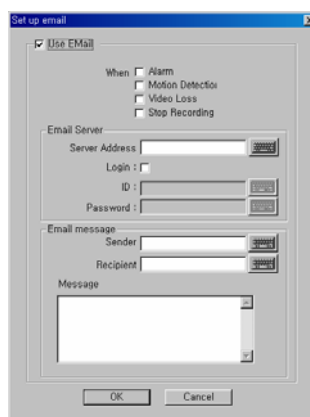
6. Move to **Center**, and enter the IP address of each server. A maximum of three servers can be set.

**NOTE:** When selecting the *Use Modem*, enter the telephone number of the target server instead of the IP address.

7. Move to **Retry Counts**, and enter the number of times you would like the DVR to try contacting the server if the connection fails.
8. Move to **When**, and select the target event. The DVR will call when the selected events occur. Multiple selections are available. You can save your changes by clicking the **OK** button. Selecting **Cancel** exits the **Set up Callback** dialog box without saving the changes.

**NOTE:** Callback messages will be displayed on the system status window of the target server. They include event type, event detection time, and system location entered during the *System* setup.

9. Click the **Set up Email...**, and set up the e-mail transmission.



10. Move to **Use Email**, and check the box to enable e-mail transmission function.
11. Move to **When**, and select the target event. The DVR will send an e-mail when the selected events occur. Multiple selection is available.
12. Move to **Email Server**, and click the text field beside **Server Address**. And then enter an e-mail server address.

13. Move to **Login**, and check the box if you want to connect the SMPS server and so login is required. And click the text field beside **ID** and **Password** then enter the ID and password for login.
14. Move to **Email message**, and click the text field beside **Sender**. And then enter a sender's e-mail address. Click the text field beside **Recipient**, and enter a recipient's e-mail address. Click the text field under **Message**, and type in the e-mail message.

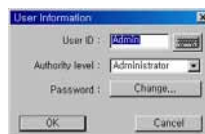
**NOTE:** If you want to send the e-mail to multiple recipients, enter a “,” or “;” between e-mail addresses in the *Recipient* box.

## Setting Up the Authority



1. Click the **Add User** button, and the **User Information** dialog box appears. Set up the user information to register a new user.

**NOTE:** Up to 256 users can be registered.



2. Click the text field beside **User ID**, and enter the user ID using either the actual keyboard or the virtual keyboard.
3. Move to **Authority level**, and select the authority level from a drop-down list: **User Group (1-3)**, **Manager**, or **Administrator**.

**NOTE:** Only the administrator level user can edit the user's information and their authority setup.

**NOTE:** The authority setup of the Administrator cannot be edited.

4. Click the **Change...** button beside **Password**, and the **Change password** dialog box appears. Set up the password for a newly registered user.



5. Click the text field beside **New password** and **Confirm new password**, and enter the password using either the actual keyboard or the virtual keyboard. The **Old password** may not be used when entering a password for a newly registered user. After you have set up the password, you can save your settings by clicking the **OK** button. Selecting **Cancel** exits the dialog box without saving the changes.

**NOTE:** Up to eight characters may be used for a password.

**NOTE:** The password will not be saved when *New password* and *Confirm new password* do not match.

6. After you have set up the user information, you can save your settings by clicking the **OK** button. Selecting **Cancel** exits the dialog box without saving the changes.
7. Click the **Edit User** button to edit the established user information. If you want to delete the user, click the **Delete User** button after selecting the user to delete in the list.

**NOTE:** The password will not be changed when the *Old password* does not match, or the *New password* and *Confirm new password* do not match.

8. Select a registered user in the list, and check the desirable option boxes to set the user's authorization.

**NOTE:** For the remote access from the BASE system, the *Remote Monitoring* option should be selected for the user's authorization. And, select the *Remote Search* if you want to review recorded video on the POST system, and select the *Network Remote Control* if you want to control the DVR remotely using the network connections.

9. Click the **Available Camera** button if you want to assign the camera number individually to each user. Check the box beside the camera number to enable the user to monitor and review that camera image. Clicking the **Enable all** or **Disable all** button enables or disables all the cameras to the target user. Click the **Apply all user** in same level button if you want to adjust the current authority settings to all users in the same authority level.



10. Move to **No local login**, and check the box if you do not want the login procedure. Otherwise, the **User Login** dialog box will appear when clicking any function button and asks entering **User ID** and **Password**.
11. Move to **Monitoring without login**, and check the box if you want to monitor the image without login procedure.
12. Move to **Auto Logout**, and check the box then set the logout dwell time (from 1 to 180 minutes) if you want to log out the DVR automatically when there is no keyboard or mouse operation during the preset dwell time.

## SmartSearch

### Overview

SmartSearch is a powerful tool for SmartGuard. It features playback and search functions for recorded data and consists of Playback Window, Timetable, Status Window and Utility Buttons. Each area displays or controls recorded information. Click the **Search** button in the SmartGuard mode to get into the SmartSearch mode. To return to the SmartGuard mode, click the **Close** button on the remote control in the SmartSearch mode.

### Features

- Searches by camera and time
- Provides recording status table
- Various search functions
- Zoom in/out function
- Image enhancement functions
- Print function
- Remote playback function
- Bookmark function
- Saves to AVI file
- Audio playback

### Main GUI



## SmartSearch Environment Setup

Click the Setup button on the Remote Control.

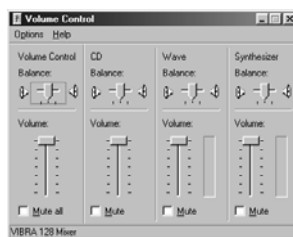
### General



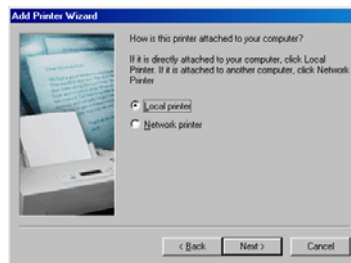
1. Move to **Local Drive**, and select the location of the local drive from the drop-down list. In most cases, the local drive is C:. Even if the software is installed on more than one hard disk drive, the local drive will be C:, assuming that the operating system (Windows) and the DVR program have been installed on the C: drive.

**NOTE:** It is recommended that you keep the C: drive as the default unless you are using the DVR for the test purposes.

2. Move to **Backup Drive**, and select the backup path from the drop-down list.
3. Move to **Automatic Data Loading**, and check the box to automatically load recorded data from the local hard disk when SmartSearch is initiated. If this box is not checked, you will need to select the data loading path manually by clicking the **Local**, **Remote** or **Backup** buttons whenever initiating SmartSearch. See the **Data Loading** section for selecting a data loading path.
4. Move to **Audio Play**, and check the box to listen to recorded audio in the playback mode. Click the speaker icon, and adjust the volume under **Wave** if you want to set the volume of an installed speaker.



5. Move to **Overlay text-in data**, and check the box to display the text-in information on the image. If this box is not checked, the text-in information will be displayed on another dialog box. (Text-In version only)
6. Move to **OSD**, and select the OSD information to be displayed on the playback image by checking the box next to desired options; **Location** and **Time**.
7. Move to **CD Burner**, and click the [...] button to register the location where the CD burning program is. Recorded data can be saved on the CD-R or CD-RW drive using the CD burning program.
8. Click the **Add Printer...** button, and set up the printer. First, check that the printer is attached to the DVR properly. When you click the button, the Add Printer wizard window appears. Follow the instructions to install and set up the printer.

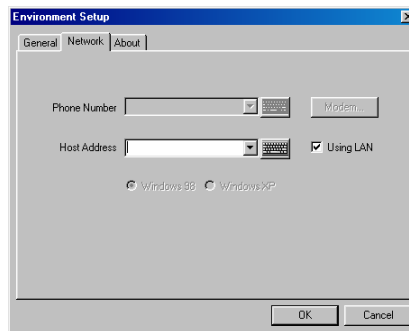


- Click the **Default** button to reset the system to default values. After you have changed all the settings, you can save your changes by clicking the **OK** Button. Selecting **Cancel** exits the dialog box without saving the changes.

## Network

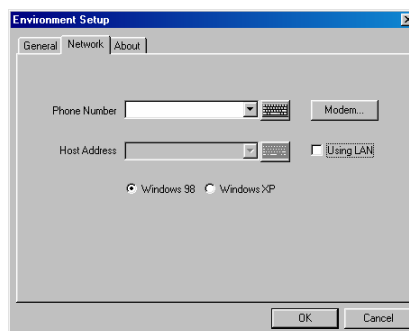
Set up network information for remote playback function.

### When Using LAN



- Move to **Using LAN**, and check the box when searching recorded images of other DVRs using a LAN.
- Click the text field beside **Host Address**. Obtain the IP address of the DVR you want to connect to from the network administrator. Enter the IP address using either the actual keyboard or the virtual keyboard.

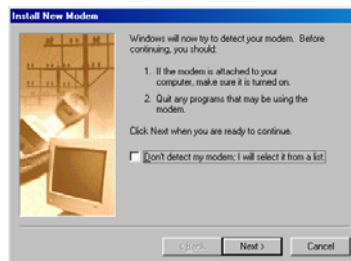
### When Using a Modem



- Move to **Using LAN**, and remove the check from the box if networking the DVR is done via the modem.

**NOTE:** The system's default is *Using LAN*. When using a modem for remote connection, remove the check from the *Using LAN* box, and then select the operating system on the remote system; either *Windows 98* or *Windows XP*.

2. Click the text field beside **Phone Number**. Enter the telephone number to use. You can use either the actual keyboard or the virtual keyboard.
3. Click the **Modem...** button to set up the modem. First, check that the modem is attached to the DVR properly. When you click the button, the Install New Modem window appears. Follow the instructions to install and set up the modem.



## About

- Program displays software version information.
- Copyright Information displays copyright information.





## Playback Window




The playback window shows the current playback image.

## Image Adjust






- **Zoom:** Enlarges or shrinks the current image. To enlarge the image, click . To shrink the image, click . This button works only in the single-screen mode. You can also enlarge or shrink the image by rolling the mouse wheel on the image.
- **Series:** Displays images from one camera image by image. For series display, select a camera button and a desired screen mode, and click . Then, click any playback-related button.
- **Screen Division:** Every time this icon is clicked, the screen mode switches (single-screen → quad → 3x3 → 4x4). For multi-screen playback, select a camera button from the timetable, and select a desired screen mode by clicking . Then click any playback-related button.

**NOTE:** 1-4, 5-8, 9-12, or 13-16 camera groups are displayed on the screen in quad mode, and 1-9 or 10-16 camera groups in 3x3 mode. The user can select which camera group is displayed by clicking any camera button in a group from the timetable.

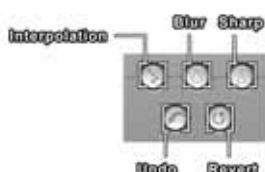
- **Full Screen:** Display the recorded images in full-screen mode by clicking  during playback. To exit from full-screen mode, click the left mouse button anywhere on the screen.

**NOTE:** Full-screen display cannot be supported if the VGA card of the system does not support the overlay function.

- **Brightness:** Changes the brightness of the current image. Click  to make the image darker, click  to make the image brighter and click  to set the brightness to the default setting.

**NOTE:** Make certain that the cameras and monitor are adjusted properly before recording because this adjustment should not be used to correct improperly recorded video.

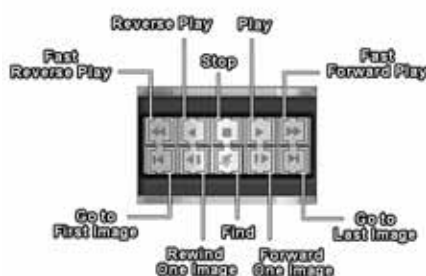
**NOTE:** The recorded video will be displayed on the playback window with 640x480 as default even though their resolution is 160x120 or 320x240. At this time, the DVR will interpolate the enlarged video automatically.



- **Interpolation:** Click the Interpolation button to reduce the alias effect that occurs when using the zoom function.
- **Blur:** Click the Blur button to blur the image to reduce noise.
- **Sharp:** Click the Sharp button to sharpen an image.
- **Undo:** Click the Undo button to cancel the last image processing operation.
- **Revert:** Click the Revert button to cancel the image processing operation and reload the original image.

## Playback Control Buttons

There are 10 playback control buttons.



**NOTE:** Pressing the *Fast Forward Play* button and *Fast Reverse Play* button toggles the 2x, 4x and 8x forward and backward speed.

**NOTE:** In the full-screen mode, the following *Floating Playback Panel* window will appear with right mouse button clicking. The window can be moved at any place on the screen by dragging the mouse.



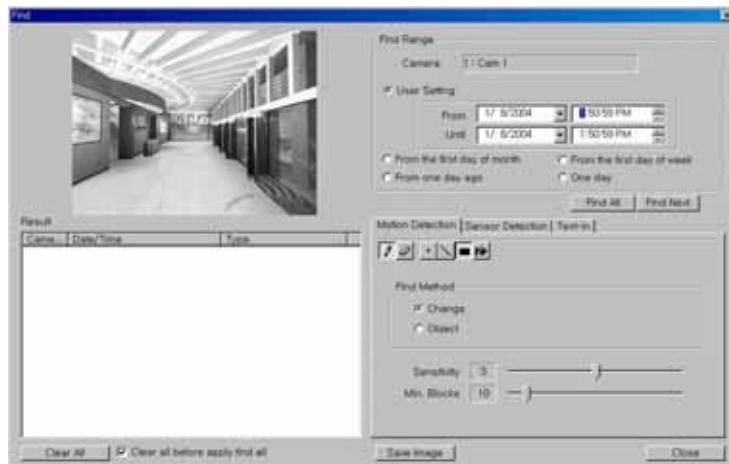
**NOTE:** The *Find* button will be disabled in the *Floating Play Panel* window.



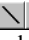





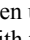
## Find

Click the Find button from the playback buttons to find images of motion detection, sensor detection, and text-in.

**NOTE:** Find function for the text-in is available only in the Text-In version.

### Finding Motion Detection



1. Move to Find Range to set the find parameters.
  - **user setting:** Finds event logs between user-defined periods. Set the desired find beginning and ending date/time in the From and Until boxes.
  - **from first day of month:** Finds event logs from the first day of this month.
  - **from first day of week:** Finds event logs from the first day of this week.
  - **from one day ago:** Finds event logs from one day ago.
  - **one day:** Finds event logs for one day.
2. Click the Motion Detection tab.
3. Set up the detection zone using the area setup icons. First, select the Draw mode  and then select one of four tools     by clicking the target icon. Move the cursor on the image of the selected camera displayed in a small window, and set up the detection area using the selected tool. Use the tools as follows:
  - Point ** — Place the cursor on the image and click the left mouse button. A single box appears where the cursor is.
  - Line ** — This tool can be used to draw irregular shapes. Place the cursor where you want to start the line. Hold down the left mouse button and drag the cursor to where you want the end of the line. Release the mouse button and a group of boxes appears along the line you drew. You can draw lines around shapes by repeating this process.
  - Rectangle ** — Hold down the left mouse button and drag the cursor in any direction. A rectangle appears. Once the rectangle is the size you want, release the mouse button and the rectangle fills with boxes.
  - Fill ** — When using the fill tool, clicking the mouse will fill that area of the image with boxes. If a shape has been drawn with the line tool, clicking inside will fill the area with boxes. Clicking outside the area will fill the outer area with boxes. If no shapes have been drawn, the entire screen will fill with boxes.

**NOTE:** When you select the Erase mode , you can use the tools as described above to delete boxes.

4. Move to Find Method, and select either Change or Object.

**NOTE:** *Change* will detect changes in a scene which is usually motion. For example, if you want to detect if anyone passes through a door, you can draw a *change* detection around the door. The system will search through recorded data for any motion in the doorway. *Object* can be used to detect when an object is removed or moved in an area where there is normally motion. For example, you can draw a box around a painting hanging in a hallway. People walking by the painting will not be listed as an event. However, if the painting is removed, this will be listed as an event.

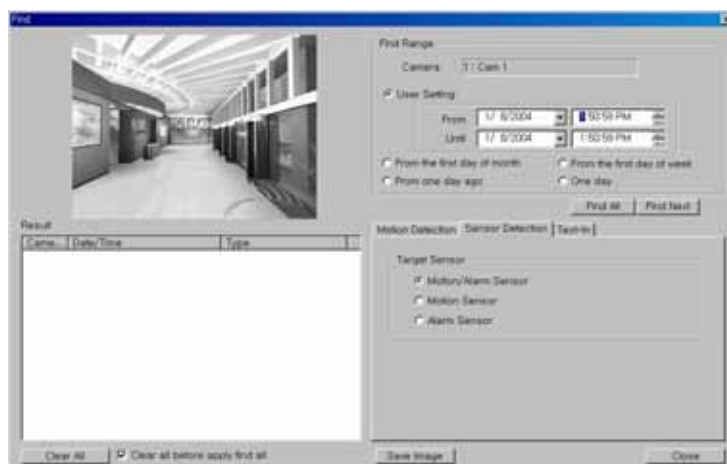
5. Move to **Sensitivity**, and set the sensitivity of the motion detection (1 to 5) by holding down and dragging the pointer. Move to **Min. Blocks**, and set the minimum number of blocks (1 to 100).

**NOTE:** The number of minimum blocks should be set less than the number of blocks within the motion detection zone. If the user draws a rectangle with 25 blocks and sets the minimum blocks to 30, nothing will be detected even though there is motion.

6. Click the **Save Image** button to save the current image of the result as a bitmap or JPEG file to the local hard disk drive or floppy disk.
7. Click the **Find All** button to find all event results within established find conditions and then display them in the **Result** list box. The image of the result can be displayed by double clicking the target event in the Result list. Remove all entries listed in the box by clicking the **Clear All** button. If the clear all before apply find all box is checked, the results before applying Find All will be removed.

**NOTE:** If you want to find one event at a time, click the Find Next button.

#### Finding Sensor Detection



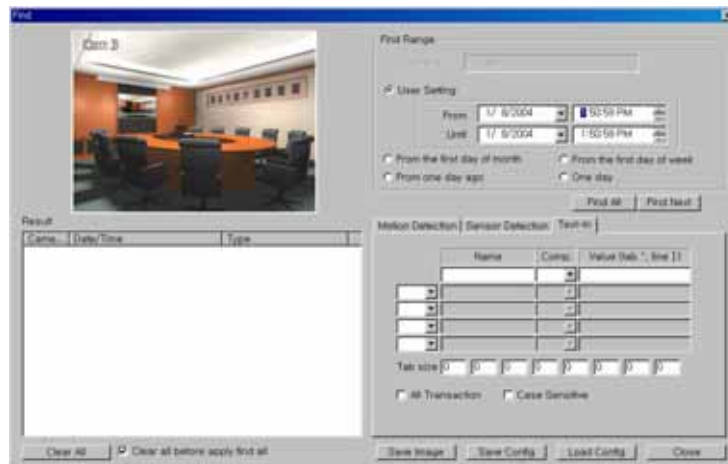
1. Move to **Find Range** to set the find parameters.
  - **user setting:** Finds event logs between user-defined periods. Set the desired find beginning and ending date/time in the **From** and **Until** boxes.
  - **from first day of month:** Finds event logs from the first day of this month.
  - **from first day of week:** Finds event logs from the first day of this week.
  - **from one day ago:** Finds event logs from one day ago.
  - **one day:** Finds event logs for one day.
2. Click the **Sensor Detection** tab, and move to **Target Sensor**, and select from **Motion/Alarm Sensor**, **Motion Sensor** or **Alarm Sensor**.

**NOTE:** Selecting *Motion/Alarm Sensor* will find event-recorded data by both motion detection and alarm input, selecting *Motion Sensor* will find event-recorded data by motion detection, and selecting *Alarm Sensor* will find event-recorded data by alarm input within established find parameters.

3. Click the **Save Image** button to save the current image of the result as a bitmap or JPEG file to the local hard disk drive or floppy disk.
4. Click the **Find All** button to find all event logs within established find parameters and then display the results in the **Result** list box. The image of the results can be displayed by double clicking the target event in the Result list. Remove all entries listed in the box by clicking the **Clear All** button. If the clear all before apply find all box is checked, the results before applying Find All will be removed.

**NOTE:** If you want to find one event at a time, click the *Find Next* button.

#### Finding Text-In (Text-In version only)



1. Move to **Find Range** to set the find parameters.
  - **user setting:** Finds event logs between user-defined periods. Set the desired find beginning and ending date/time in the **From** and **Until** boxes.
  - **from first day of month:** Finds event logs from the first day of this month.
  - **from first day of week:** Finds event logs from the first day of this week.
  - **from one day ago:** Finds event logs from one day ago.
  - **one day:** Finds event logs for one day.
2. Click the **Text-In** tab, and set up the find condition of text-in.
  - **Name:** Enter the text to find.
  - **Comp:** Enter the comparison operator.
  - **Value:** Enter the comparison value.

**NOTE:** The tab and line can be used for more specific search of the text-in data. Use a symbol '^' indicating the location of each individual category, and ']' indicating the line where the category is located. See *Appendix 8 – Text-In Query* for details.

- **Tab size:** Enter the tab size. Up to eight tabs can be set.
  - **All Transaction:** Check this box to find all transaction results within established find conditions.
  - **Case Sensitive:** Check this box to distinguish between capital letter and small letters entered in the **Name** box.
3. Click the **Save Image** button to save the current image of the result as a bitmap or JPEG file to the local hard disk drive or floppy disk.
  4. Click the **Find All** button to find all event logs within established find parameters and then display the results in the **Result** list box. The image of the results can be displayed by double clicking the target event in the Result list. Remove all entries listed in the box by clicking the **Clear All** button below the **Result** list box. If the clear all before apply find all box is checked, the results before applying Find All will be removed.

**NOTE:** If you want to find one event at a time, click the *Find Next* button. If you want to find all event for a specified camera, use Find All button with blank condition for text-in.

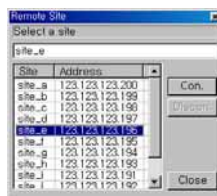
5. Click the **Save Config** button to save the current text-in related settings.
6. Click the **Load Config** button to load the saved text-in related settings.

## Utility Buttons

### Data Loading



- **Local:** Click the Local button to load recorded data from the local hard disk drive.
- **Remote:** Click the Remote button to load recorded data from the remote DVR via a modem or LAN. The following Remote Site dialog box appears, and the remote site(s) you registered for remote monitoring is (are) displayed in the list box.



- Connecting a remote site...

Click the site where you want to connect in the list box, and then click the Con. button.

Double click the site where you want to connect in the list box.

Or, hit the enter key after entering the site name or address in the text field located under Select a site. (Quick Search)

- Disconnecting a remote site...

Click the site where you want to disconnect in the list box, and then click the Discon. button.

**NOTE:** If you want to arrange the site list in the descending orders, click the *Site* or *Address* headings on the list box.

**NOTE:** The DVR can only view recorded, not live video on another DVR.

- **Backup:** Click the Backup button to load backup data from the extra backup device (e.g. DVD-RAM, CD-R(W), USB hard disk drive).

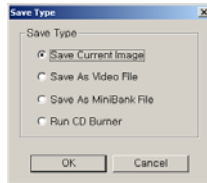


Accessing SmartGuard: Click the GUARD button to quit SmartSearch and return to SmartGuard.



## Save

Click the **Save** button to save recorded video.



- **Save Current Image:** Saves the current image as a bitmap or JPEG file to the local hard disk drive or floppy disk.

**NOTE:** When you save the current image as a bitmap file (\*.bmp file format only) the watermark will be included on the image, so you can check whether the saved image has been forged using the *SmartWatermark* (watermark viewer program).

- **Save As Video File:** Saves any video clip as an AVI file.
- **Save As MiniBank File:** Saves any video clip as an ".exe" file.
- **Run CD Burner:** Saves the recorded data on the CD-R or CD-RW drive using the CD burning program.

**NOTE:** CD burning might not be successful if the SmartGuard is recording video during CD burning. Please stop recording for safe CD burning.

**NOTE:** The image and video clip can be saved only under the "C:\VDR-Series\Temp" directory or on the removable disk including floppy disk and CD-RW.

### Save Current Image

1. Click the **Save Current Image** radio button in the **Save Type** dialog box, and click the **OK** button.



2. Move to **Save in**, and select the save location from the drop-down list.
3. Move to **File name**, and enter the file name using either the actual keyboard or the virtual keyboard.
4. Move to **Save as type**, and select the file format from the drop-down list. The available formats are bitmap and JPEG files.
5. Click the **Save** button to save the current image. Selecting **Cancel** cancels the saving operation and closes the dialog box without saving the settings.

**NOTE:** If you want to delete the file or folder, select the target file or folder then click the *Delete* button. You can delete the file or folder only saved under the "C:\VDR-Series\Temp" directory.


## Save As Video File

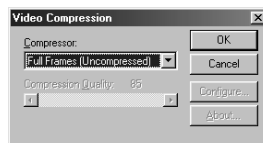
1. Click the **Save As Video File** radio button in the **Save Type** dialog box, and click the **OK** button.



2. Move to **Camera**, and select the camera number to save from the drop-down list.
3. Move to **AUDIO**, and check the box to save audio with video.
4. Move to **write to CD**, and check the box if you want to save the video clip on the CD directly.

**NOTE:** Writing on the CD is available only on the Windows XP embedded version over 1.4.

5. Move to **Save Range**, and set the range using the arrow buttons.
6. Move to **Frame**, and set the frame rate by holding down and dragging the pointer. You can set the frame from 1 to 30. When the **AUDIO** box is checked, you cannot set the frame rate. It will be fixed at 30 frames in order to synchronize the video and audio.
7. Click the **Start** button to display the **Save As** dialog box. Selecting **Close** cancels the saving operation and closes the dialog box. When the **write to CD** box is checked, the **Enter file name** dialog box appears, and you need to select the CD recorder to use, and select the folder name to save on the CD by clicking the  button.
8. In the **Save As** dialog box, select the save location from the drop-down list in the **Save in**, and enter the file name in the **File name** box using either the actual keyboard or the virtual keyboard. Click the **Save** button to save the settings and display the **Video Compression** dialog box. Selecting **Cancel** closes the dialog box without saving the settings and returns to the **Save As Video File** dialog box.



9. Move to **Compressor**, and select the compressor to use from the drop-down list.

**NOTE:** Depending on the DVR, there are many different compressors available. If you select *Full Frames (Uncompressed)*, the AVI file size may be large but the image quality will be good.

10. Click the **OK** button to return to the **Save As Video File** dialog box and start saving the video clip with established parameters. Selecting **Close** returns to the **Save As Video File** dialog box without saving the settings.

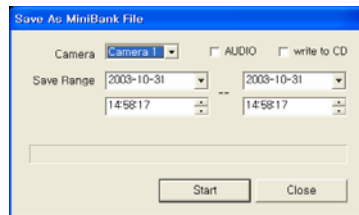
**NOTE:** The *Configure...* button for configuring a selected compressor and the *About...* button displaying the compressor information might be inactive depending on the selected compressor.

11. In the **Save As Video File** dialog box, click the **Start** button to save the video. Selecting **Cancel** cancels the saving operation and closes the dialog box without saving the settings.

**NOTE:** The target disk for saving AVI files must have at least 150 MBytes free space.

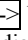
## MiniBank Save

1. Click the MiniBank Save radio button in the Save Type dialog box, and click the OK button.



2. Move to Camera, and select the camera number to save from the drop-down list.
3. Move to AUDIO, and check the box to save audio with video.
4. Move to write to CD, and check the box if you want to save the video clip on the CD directly.

**NOTE:** Writing on the CD is available only on the Windows XP embedded version over 1.4.

5. Move to Save Range, and set the saving range using the arrow buttons.
6. Click the Start button to display the Save As dialog box. Selecting Cancel cancels the saving operation and closes the dialog box without saving the settings. When the write to CD box is checked, the Enter file name dialog box appears, and you need to select the CD recorder to use, and select the folder name to save on the CD by clicking the  button.
7. In the Save As dialog box, select the save location from the drop-down list. In Save in, enter the file name using either the actual keyboard or the virtual keyboard in the File name.

**NOTE:** When you creating the file name for the video you are saving, you must enter "/" between the directory name and file name. For example, if you enter "abank/test", a directory named "abank" with an '.exe' file named "test.exe" will be created.

8. Click the Save button to save the video, Selecting Cancel returns to the MiniBank Save dialog box without saving the settings.

**NOTE:** When saving a minibank file on a floppy disk or zip disk, it can be saved on multiple disks if the file size is larger than the disk capacity. Split files can be merged using the provided MiniBank Wizard. Double-clicking the *MiniBankWizard.exe* file starts the MiniBank Wizard. Move to the *File Merge* tab in the MiniBank Wizard dialog box, and select the folder where the split files are located. The first file among split files will be displayed in the box next to the Folder. Click the displayed file and then click the *Merge Files* button. Double-clicking the merged file starts the *Player* program.

**NOTE:** See the following *MiniBank Self Player* section for the reviewing the saved MiniBank video.

## MiniBank Self Player

You do not need to install any special software on your PC to review the MiniBank video since each MiniBank file contains the self player program. Double-click the target file to start the Player program.

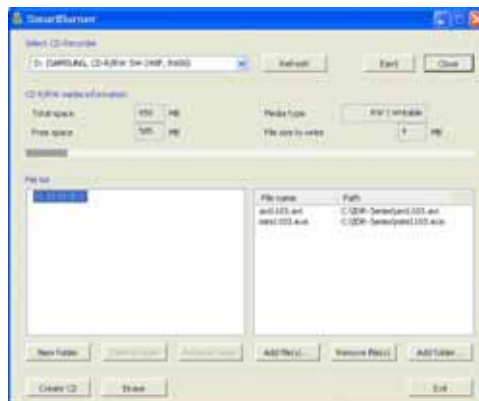
**NOTE:** It is suggested that the computer used for the Player program has at least an 800MHz Pentium III. If your CPU is slower than this, minibank files recorded at maximum speed with very high image quality will be played back slowly.

- The Monitoring Screen displays the backed up images. Clicking the right mouse button on the images switches the screen size between 320x240 and 640x480.
- Click the Save Button to save the current image in a bitmap file format to the local hard disk drive or floppy disk.
- Click the Print Button to print the current image on the printer connected to your computer.

- The **Backup File Information** window displays information regarding the backup file. **Location** displays the site description of the DVR where the backup was made. **Record** displays the time span of the video backup file. **Encryption** displays whether the backup file has been tampered with. **Normal** means the file has not been tampered with, **Wrong** means the system has detected tampering, and **no mark** means the user cancelled the encryption check.
- The **Current Image Information** window displays information about the current image. **Camera Title** displays the camera name of the current image, and **Time** displays the date and time the image was recorded.
- The **Playback Function Buttons** include fast backward, backward, play, pause, fast forward, go to the first image, go to the previous image, go to the next image, and go to the last image buttons.
- The **Image Search Slide Bar** displays the current playback position. The user can move to another image by clicking the mouse and dragging along the slide bar.
- The **Brightness Revert Button** reloads to the original image.
- The **Brightness Control Slide Bar** adjusts the brightness of the backup images by clicking the mouse and dragging along the slider bar. Minute brightness changes can be made by using the arrow buttons located at each end of the bar.
- Clicking the **OSD (On-Screen Display) Button** switches the OSD option. The OSD information includes camera location and date/time.
- Clicking the **Mute Button** (speaker icon) mutes the recorded audio.
- Clicking the **Quit Button** exits the Player program.

## Run CD Burner

Click the **Run CD Burner** button to initiate the CD burning program.

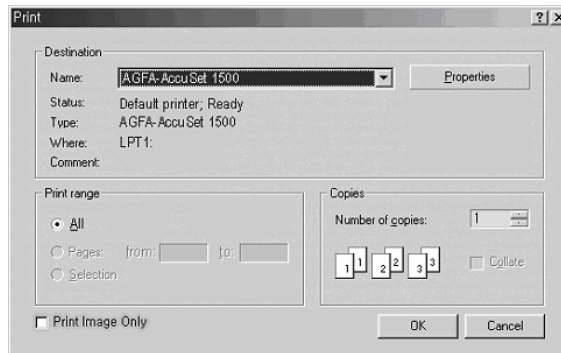


Select the CD recorder to use, and select the video file or folder to record on the CD after clicking the **Add file(s)** or **Add folders**. And then click the **Create CD** button. The **CD recording process** dialog box will show the recording status. During the CD recording, the user can stop the process by clicking the **Cancel** button.

- **Select CD-Recorder:** Clicking the **Refresh** button updates the list of connected CD recorder. If you want to eject the media from the drive, click the **Eject** button. And click the **Close** button if you want to close the drive door.
- **CD R/RW media information:** Displays the CD-R/RW media information.
- **File list:** Clicking the **New folder** button creates the new folder, and clicking the **Delete folder** button deletes the selected folder. If you want to rename the selected folder, click the **Rename folder** button or click the mouse button on the folder.
- **Erase:** Click the button to erase all data on the CD-RW media. If you want to save the time required to erase the data, do not select the **Full erase** option.
- **Exit:** Click the button to exit the **SmartBurner** dialog box.

## Print

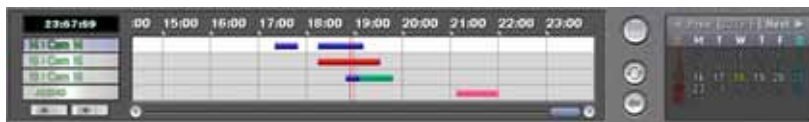
Click the Print button to print the current image.



1. Move to **Name**, and select an installed printer to use from the drop-down list.
2. Do not change the setting for the **Print range**.
3. Move to **Copies**, and set the number of copies using arrow buttons.
4. Move to **Print Image Only**, and check the box if you want to print the image without text information.
5. Click the **OK** button to print the current image. Selecting **Cancel** cancels printing operations and closes the dialog box without saving the settings.

## Timetable Window

The timetable window consists of a record timetable, camera label and a calendar/bookmark. You will see the bank file recording information. Various functions of the timetable window enable fast searches.



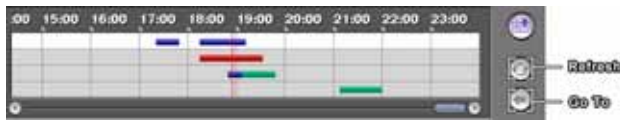
## Camera Label Buttons



Camera label buttons show camera information. Change the current playback camera by clicking the camera label button. The camera label buttons that do not have recorded data cannot be selected. Only four camera labels are shown at a time. Use the up and down arrows or roll the mouse wheel to scroll through the list of cameras.

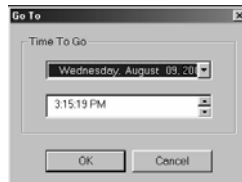
## Recording Status Bar

Recorded information is shown on the recording status bar. Search specific video by clicking the mouse on the desired segment or scroll by moving the scroll key from left to right. The color of the bar indicates different types of recording: Yellow for Pre-alarm, Cyan for Motion Detection, Red for Sensor, Grey for Text-in, and Blue for Time-lapse. Every clicking the right mouse button on the timetable zooms the record timetable in with three levels; one time (hour based time interval) in the first level, four times (30 minute based) in the second level, and eight times (10 minute based) in the third level.



- **Refresh:** Click the Refresh button to reload recorded data from the local hard disk drive.
- **Go To:** Click the Go To button to go to the specific dates and times directly.

Click the Go To button to go to the specific dates and times directly.



1. Move to **Time To Go**, select a date from the drop-down list, and set the time using the arrow buttons.
2. If you click the OK button after setting the conditions, the image meeting the established conditions will be displayed on the playback window. Selecting **Cancel** cancels the Go To operation and exits the dialog box without saving the changes.

## Calendar

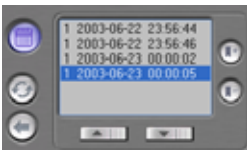




Select recorded data from the calendar. The calendar provides access to single day recorded data. Click the date you want to search. Scroll through the months by clicking **◀ Prev** and **Next ▶**.



**Bookmark:** Accesses the bookmark feature.

## Bookmark



Add or delete bookmarks for recorded images. A bookmark lists the camera number, date and time. This feature can be used for reviewing the specific image fast and easily. Click the **Add** button  to bookmark the currently displayed image. If you want to delete the bookmark, select the target information and then click the **Delete** button .



**Calendar:** Accesses the calendar feature.

## Audio Playback

### Checking Audio Recording Configuration

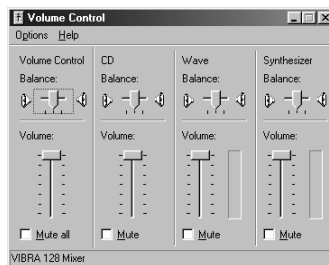
1. Click the **GUARD** button to access to the SmartGuard mode.
2. Click the **SETUP** button on the main GUI of SmartGuard.
3. Move to the **Sensor** tab and/or **Motion Detection** tab.
4. Check that **Record Audio** is selected.
5. Click the **Setup Audio...** button, and check that the audio input type is properly set.

## Checking Audio Playback Configuration

1. Click the **SEARCH** button on the main GUI of SmartGuard to return to the SmartSearch mode.
2. Click the **SETUP** button on the main GUI of SmartSearch.

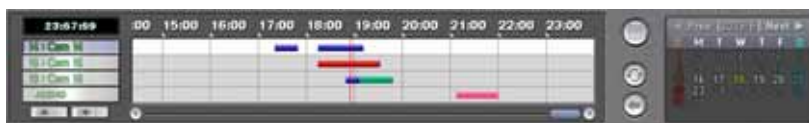


3. Move to the **General** tab, and check that **Audio Play** is selected. Click the speaker icon, and check that the volume under **Wave** is set properly.



## Playing Recorded Audio

Click a playback button on the main GUI of SmartSearch. An Audio-play icon in the shape of a speaker will display at the top left in the small playback window if the target camera has recorded audio information. The recorded audio time bar is located below camera 16, and its information is shown on the recording status bar in pink.



**NOTE:** Audio is played only in the single-screen mode and forward playback mode.

## SmartBackup

To initiate the SmartBackup program, click the **Setup** button in the SmartGuard mode. Move to the **System** tab, and click the **Set up backup...** button. The following SmartBackup dialog box appears.



### Stored Image Information

- **Drive Status**
  - **Drive:** Shows all attached storage devices including hard disk drive(s) and CD-RW drive.
  - **Type:** Shows the usage of each drive (Recording, Backup). When the drive is used for both recording and backup, backup icon will be displayed.
  - **Recording Period:** Shows the recording period contained on each (source or target) drive.
  - **Status:** Shows the drive's status (Full, Available, Empty, Not initialized).
- **Recording Period:** Shows the recording period contained on the recording drive.
- **Latest Backup Time:** Shows the latest backup date and time of the target drive.

### Backup Drive Information

- **Period:** Shows the recording period contained on the backup drive.
- **Remain:** Calculates and shows the remaining space on the backup drive.

### Status

Shows backup drive status and a progress bar for the auto/manual backup.

### Manual

Click the **Manual...** button to start the manual backup mode. When the DVR is set to Auto Backup mode, this button will be inactivated. Release the auto backup mode during the SmartBackup Setup if you want to set up the manual backup. See the following **Manual Backup** section for setting up the manual backup.

### Update

Click the **Update** button to update the values in the SmartBackup dialog box. Recording Period, Latest Backup and Backup Drive Information will be updated any time this button is selected.


## Setup

Click the **Setup...** button to set up the backup information. See the **SmartBackup Setup** section.

## CD Burner

Click the **CD Burner** button to save the backup data on the CD-R or CD-RW media using the CD burning program.

## Hide

Click the **Hide** button to hide the **SmartBackup** dialog box. To close the dialog box and exit from the **SmartBackup**, click  at the top-right hand corner.

## Manual Backup

Click the **Manual...** button in the **SmartBackup** dialog box to start the manual backup mode. The following **Manual Backup** dialog box appears. There are two ways to back up data manually; backup by time and backup by list.

**CAUTION:** During the manual backup, **SmartGuard** will stop recording.



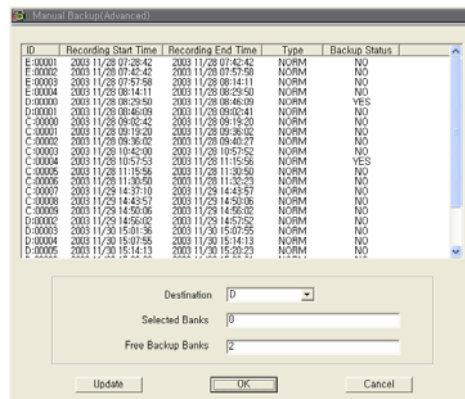
### Manual Backup by Time

1. Move to **Destination**, and select a backup drive from a drop-down list.
2. Move to **Begin**, and set the backup beginning date and time. Select the beginning date from the drop-down list, and set the beginning time using the arrow buttons.
3. Move to **End**, and set the backup ending date and time. Select the ending date from the drop-down list, and set the ending time using the arrow buttons.
4. Click the **Start** button to start the manual backup by time. The DVR backs up the recorded data from the established beginning date and time to the established ending date and time. Only time-lapse mode recorded data will be backed up. Selecting **Cancel** exits the dialog box without saving the settings.

**NOTE:** Backup of audio data, pre-alarm images, and text-in data can only be done by using the **Manual Backup by List**. See the following *Manual Backup by List* section.

### Manual Backup by List

1. Click the **Advanced...** button. The following **Manual Backup (Advanced)** dialog box appears.



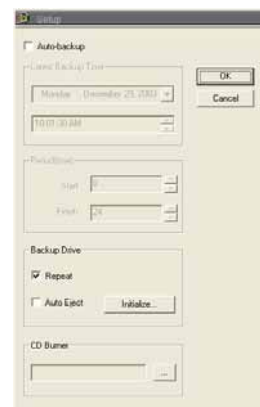
- ID displays the serial number of the record banks.

**NOTE:** The BANK is the basic unit for the database used by the DVR system.

- Recording Start Time and Recording End Time display the recording beginning date/time and ending date/time of each bank.
- Type displays the type of record bank. Normal means time-lapse recording, and PRExx means the pre-event recording.
- Backup Status displays whether a target bank has already been backed up or not.
- Select the bank to back up by clicking the target bank in the list box. Multiple banks can be selected by using the Ctrl or Shift keys on the actual keyboard. Click each bank to be backed up while pressing and holding the Ctrl key. If you want to select all banks in a specific range, click the first and last banks to be backed up within the range while pressing and holding the Shift key.
- Move to Destination, and select a backup drive from a drop-down list.
- The number of selected banks will be displayed in the Selected Banks box. The Free Backup Banks box displays the number of banks that are available for backup.
- Click the Update button to update the record bank information. After you have set up the Manual Backup by List, click the OK button. Selecting Cancel exits the dialog box without saving the settings.

## Setup

Click the Setup... button in the SmartBackup dialog box to set up the backup information. The following Setup dialog box appears.

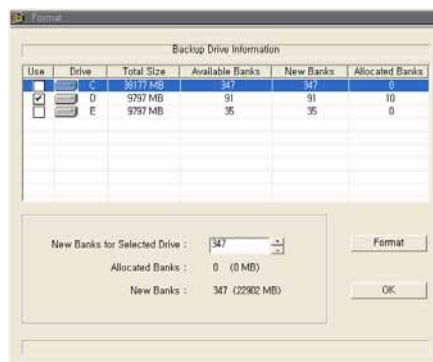


1. Move to **Auto-backup**, and check the box to set up auto backup. If this box is checked, the DVR will back up automatically according to the established auto backup settings. If **Auto-backup** is not selected, the DVR is in the manual backup mode and follows the established manual backup settings. See the **Manual Backup** section for setting up the manual backup.
2. Latest Backup Time shows the latest backup date and time. When the DVR is set to Auto Backup mode, only the banks recorded after Latest Backup Time will be backed up.
3. Move to **Period (time)**, and set the backup beginning time in **Start**, and ending time in **Finish** using the arrow buttons. If you set the value to 0 for the Start and to 24 for the Finish, the DVR will back up from 0:00 to 24:00 on that day.
4. Move to **Backup Drive**. If you want to recycle all the backup drive, click the **Repeat** box. If the Repeat box is not checked, the DVR stops backing up when all the backup drive is full. Click the **Auto Eject** box to use the auto eject feature of the backup drive if the drive is so equipped.

**NOTE:** *Repeat* and *Auto Eject* can not be selected at the same time.

**NOTE:** Active menus under the Backup Drive will vary depending on the type of media used.

5. Click the **Initialize...** button to initialize the backup space. The backup drive should be initialized before backing up.



6. Drive column displays the drive location. Total Size column displays the total size of the installed backup drive, and Available Banks displays the number of available banks for backup. After initializing, Allocated Banks will display the number of allocated banks for backup.
7. Move to **Use** column, and check the box beside the drive to select it as a backup drive. Multiple drives can be selected.

**NOTE:** You can not select the drive which has no("0") allocated bank.

8. Move to **New Banks for Selected Drive**, and set the number of banks to be used for backup by using the arrow buttons. New Banks column will display the number of banks to add.
9. Click the **Format** button to start initializing the backup space of the selected drive.

**NOTE:** Any bank contents stored on the drive will be deleted when you initialize the backup drive.

10. Move to **CD Burner**, and click the **...** button. Register the program location to use.

## CD Burner

Click the CD Burner button in the SmartBackup dialog box to initiate the CD burning program registered during SmartBackup setup. Refer to the SmartSearch – Run CD Burner section for the instructions on CD burning.

**NOTE:** CD burning is not available during the automatic backup.

### Target files for CD burning

- Image files saved in SmartSearch mode.
- Video files saved in SmartSearch mode.
- MiniBank files saved in SmartSearch mode.
- Whole ibbank directory on the drive used for backup

**NOTE:** The size of the ibbank directory should be smaller than the capacity of the CD drive. When using the 650MB CDR or CDRW media, you must not exceed nine backup banks.

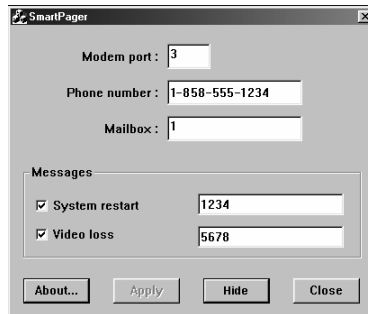
### Safeguards on Installing and Using the CD Burning Program

- Do not install the DirectCD or HP-DLA programs for the system safety when installing the CD burning program.
- Select the Buffer underrun prevention option when initiating the CD burning program. Selecting this option can be different depending on the installing program.
- Refer to the manual provided with the CD-R or CD-RW drive for instructions on burning the media.

## SmartPager

SmartPager pages the system manager when something happens to video input, such as a video signal loss or system reboot. SmartServer and SmartPager cannot be run at the same time because they both use the modem. If you want to run SmartServer and SmartPager at the same time, a second modem must be installed. To set up SmartPager, click the **Setup** button in the SmartGuard mode. Move to the **System** tab, and click the **Set up Pager...** button. The following SmartPager dialog box appears.

**NOTE:** SmartServer is invisible software that prepares images to send to remote sites via a modem or LAN.



1. Click the text field beside **Modem port**, and enter the COM port number of the modem.
2. Click the text field beside **Phone number**, and enter in the pager number. Make certain to enter the number exactly as it must be dialed including any numbers such as 9 to get an outside line or area codes.
3. Click the text field beside **Mailbox**, and enter the number for paging when the pager uses a voice mailbox.
4. Move to **Messages**, and select the paging condition. Check the box beside the events that should cause the DVR to call the pager and enter the user-specified number in the text field. Multiple conditions can be selected. When selecting **System restart**, the DVR pages whenever the system is restarted. When selecting **Video loss**, the DVR pages whenever the system loses video input from a camera.
5. Click the **About...** button to see the software version information.
6. Click the **Apply** button to save the changes. This button is enabled when certain values are changed. The changes are saved only when you click this button.
7. Click the **Hide** button to hide the **SmartPager** dialog box.
8. Click the **Close** button to end SmartPager.

## Chapter 3 — Remote Access

You can view video or control the DVR remotely via modem or LAN. For remote access, we provide the SmartBase program. It has three major functions; remote monitoring, remote playback and remote control. Remote monitoring makes it possible to do real-time monitoring remotely, and remote playback makes it possible to play recorded video from the DVR remotely. Remote control allows controlling the DVR remotely including changing the setup.

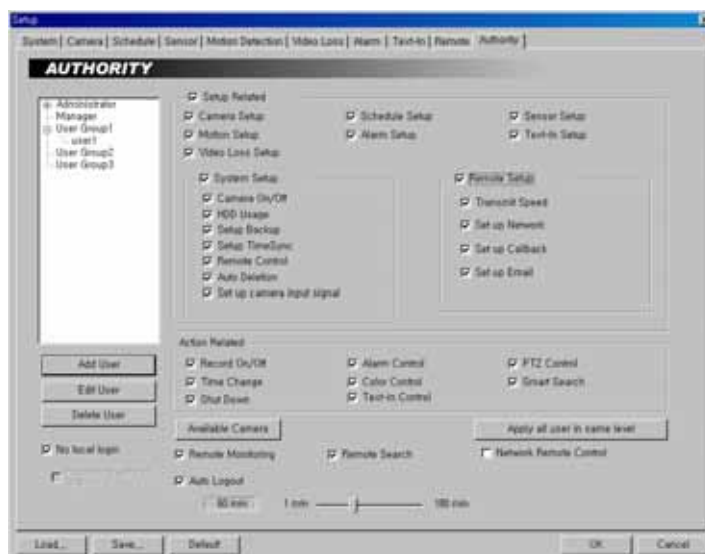
**NOTE:** A BASE system can view live video or review recorded video on POST systems. The POST system can only review recorded video on other POST systems when they are networked via LAN.

### Installation

At least one POST DVR and a system for BASE are needed for using the remote access function. The POST is the system to which the camera cables connect directly, and the BASE is the system which is installed at another site for remote access. Install the BASE software at the remote site after installing the DVR.

### POST System Setup

Click the **Setup** button in the SmartGuard mode, and the following **Setup** dialog box appears. Move to the **Authority** tab, and check the **Remote Monitoring** box for the user's authorization if you want to access to the remote POST system from the BASE system.



## BASE System Setup

### SmartBase — Remote Monitoring and Recording Software

**NOTE:** When selecting the *Remote Monitoring* for the user's authorization during the POST system setup, you can access to the remote POST system from the BASE system.

After installing the BASE software on your PC, click the Start button from the task bar. Move the cursor to Programs, then to IDR Series BASE to open the program list. Select SmartBase.

**NOTE:** If you do not use the overlay display mode on the SmartBase system, you can move the SmartBase window at any place on the monitor by dragging the mouse.



#### Monitor

- **Display Format:** Various display formats (single-screen, full-screen, quad, 3+4, 3x3, 2+8, and 4x4) are provided for convenient user interface, and each format can be selected by clicking screen buttons described below. The camera groups for multi-screen formats are composed of cameras 1 to 16 in order. The following camera groups are displayed on the monitor one at a time according to each display format: 1-4, 5-8, 9-12, or 13-16 in quad mode; 1-7 or 8-16 in 3+4 mode; 1-9 or 10-16 in 3x3 mode; 1-10 or 11-16 in 2+8 mode. The user can select which camera group is displayed by clicking any camera button in a group from camera buttons below.
- **OSD:** OSD information including camera description, recording status, and sensor detection can be displayed on the image. Click the **Setup** button and move to the **System** tab in the **Setup** dialog box. Check the **Show OSD** box to display the OSD information.

#### Camera / Alarm / POS

**Camera:** Click the individual camera buttons to display the selected camera.

**Alarm:** Clicking the alarm icon button causes the alarm control buttons to display. The user can check the alarm status and control the alarm output remotely. Only the administrator can control the alarm output from a remote site.

**POS:** Clicking the POS icon button causes the POS control buttons to display. The user can watch the text data coming from the POS remotely.

## Screen Buttons

**Screen Mode:** Click the desired screen mode buttons.

- To select the screen mode, click one of the screen buttons; single-screen, quad, 3+4, 3x3, 2+8, 4x4, or full-screen.
- To view a specific image in the single-screen mode, move the cursor to that image and double click the left mouse button. Click the left mouse button in the window to return to the previous screen mode.
- To enter the full-screen mode, click the far right button. Click the left mouse button anywhere on the monitor to exit the full-screen mode.

## System Status

- **Mode Status:** There are two operating modes; view only mode and recording mode. The SmartBase records images only in the recording mode.
- **HDD Indicator:** Shows the remaining hard disk space and the type of hard disk usage. Click the **Setup** button and move to the **System** tab in the setup dialog box. Select the between **Once** and **Recycle** for HDD usage.

**NOTE:** *Once* (displayed as *Disk available: \*\*%*) records until the hard disk is full and then stops recording. *Recycle* (displayed as *Repeat Recording*) records over the oldest images when the hard disk is full.

- **Event Logging:** Shows event logs and callback messages of the remote system. For this function, the remote system should be in the event-driven recording mode. To scroll up and down the list, hold down the left mouse button on the list and move the cursor up and down, or roll the mouse wheel on the list. The display information of the event log and callback message is shown below:

Event Log – Date\_Time (Site Name)

[Camera No. of the BASE system] Alarm Type Alarm No.

Callback Message – Date\_Time (callback)

Site Name : Alarm Type Alarm No.

## Clock Mode

Click the left mouse button on the clock area, and set date display (MM-DD-YYYY/...) and time display (12 Hours/24 Hours) formats. Click the right mouse button on the clock area, and set date, time, and time zone.

**CAUTION:** If you change the time, images dated later than the new date/time are deleted. Back up the images if you want to save them.

## Image Adjust

You can adjust the brightness, contrast, hue and saturation by clicking the designated buttons. Click the **Default** button to reset them to the default settings. Only the administrator can adjust the image.




**NOTE:** These adjustments should not be used to correct improperly set cameras or monitors.

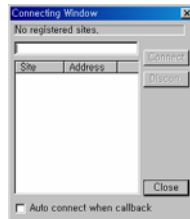
**NOTE:** It is important that images are properly adjusted. These adjustments cannot make up for improperly adjusted images when the images are recorded.

## PTZ Control




Displays PTZ control buttons. Controlling PTZ from the SmartBase mode changes the PTZ setup of the remote DVR. Only the administrator can change PTZ setup from a remote site.

## Utility Buttons

- **Accessing SmartSearch:** Click the **SEARCH** button  to run the SmartSearch.
- **Power Button:** Click the **Power** button  to quit the system.
- **Connect:** When the **Connect** button  is clicked, the following **Connecting Window** appears. If you want to search the site quickly from the site list, enter the site name or address in the text field and then hit the enter key. Entering the ID and password of the remote system to connect is required. Check the **Auto connect when callback** box if you want to connect the remote site automatically when receiving a callback message.

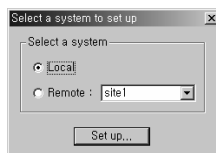


**NOTE:** If you want to arrange the site list in the descending orders, click the *Site* or *Address* headings on the list box.

- **Auto Sequencing:** When the **Auto Sequencing** button  is clicked, the SmartBase sequences the cameras in order. Whenever you click the button, it toggles between On and Off. The switching interval can be set during the system setup.
- **Mode Selection:** The record mode is selected when the record button  is clicked. SmartBase returns to view only mode automatically when it is unable to record (for example, when the hard disk is full). The BASE system records only in accordance with the recording schedule, which is set manually during the system setup. Note also that clicking this record button prepares the BASE system for recording. In this state, the BASE system will follow the recording schedule.
- **Setup:** When the **Setup** button  is clicked, a dialog box appears. Set the values for remote monitoring and remote system control.

## System and Remote Monitoring Setup

1. Click the **Setup** button on the main GUI of SmartBase.



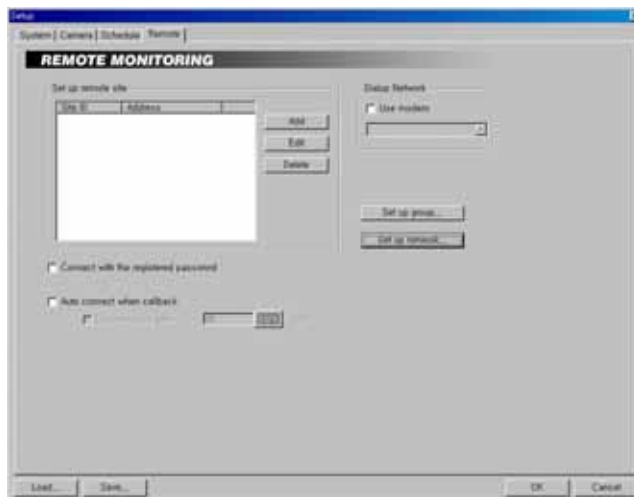
2. Click the **Local** radio button and then click the **Set up...** button.
3. Move to the **System** tab.



4. Move to Show VLoss Dialog, and check the box if you want to show the video loss acknowledge dialog when the video loss is detected.
5. Move to Verify password, and check the boxes to use a password Before shutdown, Before stop recording, Before setup, and/or Before search.

**NOTE:** Refer to the *SmartGuard* section for setting up other menus.

6. Move to Remote tab.



7. Click the Add button, and register the remote site. Up to 256 sites can be registered.



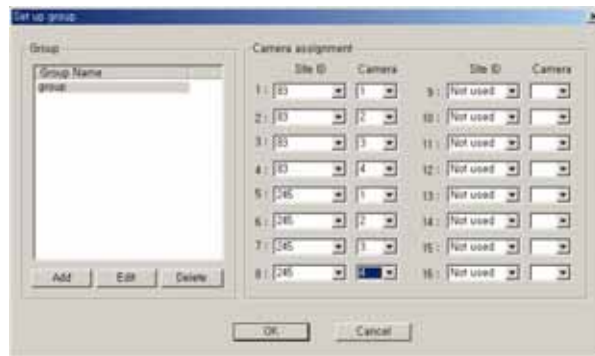
8. Click the text field beside **Site ID**, and enter the site name to register using either the actual keyboard or the virtual keyboard.
9. Click the text field beside **Network address**, and enter the IP address of the remote DVR, acquired from your network administrator. Move to **Use modem**, and check the box when using a modem for remote access, and then select the operating system on the remote system; either *Windows 98* or *Windows XP*. For the remote connection via a modem, the dial-up networking must be installed on the remote DVR and the **Phone number** and **Dial-up callback IP** should be entered. See Appendix 4 – Network Setup (Modem) for setting up the dial-up networking.

**NOTE:** The same IP address entered during the dial-up callback setup on the POST system should be entered on the BASE system. The independent IP address starting from 10.10.10.20 will be used to identify the remote DVR systems.

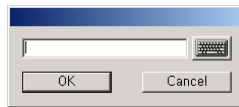
10. Click the text field beside **User ID**, and enter the user ID.
11. Click the text field beside **Password**, and enter the user password. Then click the text field beside **Confirm Password**, and enter the user password again to confirm the password. Move to **No Password**, and check the box when using a User ID without a password.

**NOTE:** Up to 16 characters maybe used for a user ID, and eight characters for a password.

12. Clicking the **OK** button saves the changes and returns to the **Setup** dialog box. Selecting **Cancel** exits the dialog box without saving the changes.
13. In the **Remote** tab, move to **Connect with the registered password**. If this box is checked, the remote DVR will be connected automatically with registered user ID and password. If there is no registered password, the login dialog box will appear. The connection fails when an incorrect password is entered.
14. Move to **Auto connect when callback...**, and check the box if you want to connect the remote site automatically when the BASE system receives a callback message. This auto callback connection can be disconnected automatically if you check the **Disconnect after** box and set the desired disconnection time.
15. Move to **Dialup Network**, and check the **Use modem** box when using a modem for remote access, and then select a modem to use from the drop-down list.
16. Click the **Set up group...**, and set up the group management. The BASE system can monitor up to 16 remote DVRs simultaneously. For the effective management of the remote DVRs, the user can register multiple remote DVRs in one group. Up to 64 groups can be registered.



17. Move to **Group**, and set up the group information. Click the **Add** button to register a new group.



18. Enter the name of the group to register, and click the **OK** button.  
 19. Move to **Camera assignment**, and select the target remote site and camera number from the drop-down list.  
 20. Clicking the **OK** button saves the changes and returns to the **Setup** dialog box. Selecting **Cancel** exits the dialog box without saving the changes.

**NOTE:** If you want to edit the established group information, click the *Edit* button after selecting a registered group from the list. Then, edit the group information. If you want to delete a registered group, click the *Delete* button after selecting a registered group from the list.

21. 21. Click the **Set up network...**, and set up the network. See Appendix 3 – Network Setup (LAN) or Appendix 4 – Network Setup (Modem).  
 22. 22. After you have changed the settings, you can save your changes by clicking the **OK** button. Selecting **Cancel** exits the dialog box without saving the changes.

## SmartSearch — Remote and Local Playback Software

The user can access the SmartSearch mode by clicking the **Search** button on the main GUI of SmartBase.

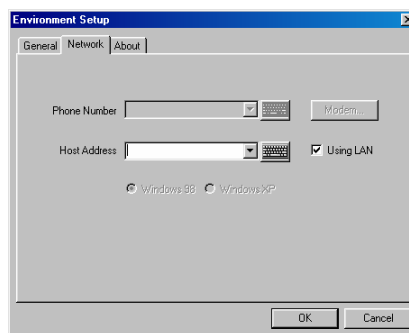


### Remote Playback Setup

**CAUTION:** The user can play back the video recorded on the remote DVR when the user has an authority with Remote Search. The *Remote Search* option should be selected during SmartGuard – Authority setup of the remote DVR you want to connect.

**NOTE:** During the remote playback on the BASE system, the information about recorded audio will be shown on the timetable.

Click the **Setup** button to display the Environment Setup dialog box. And then set up the network information for remote playback.



**NOTE:** The system's default is *Using LAN*. When using a modem for remote connection, remove the check from the *Using LAN* box, and then select the operating system on the remote system; either *Windows 98* or *Windows XP*.

**NOTE:** See *Chapter 2 – Tools: SmartSearch* section for setting up and using the SmartSearch.

## Appendix 1 — Accessing Windows

Since the DVR is new technology, it might be unfamiliar to many users. Many problems can occur from incorrect Windows settings. The DVR requires specific Windows settings for optimal performance. That is why the Windows mode has been blocked. This section describes the steps to get into the Windows mode.

### The Relationship Between "Accessing Windows" and "SmartShell"

The SmartShell is the only way to get into the Windows mode. See Appendix 2 – SmartShell. To access Windows, you must be in the SmartShell mode because the DVR will shut down when you click the **POWER** button in the SmartGuard mode. Use the following instructions to change the Automatic Shutdown mode so that you will be able to access Windows.

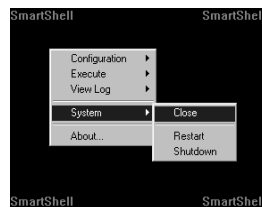
### How to Access the Automatic Shutdown Hidden Dialog Box

1. Double click the logo (or empty space) located above the **Rec** button in the SmartGuard mode. The splash window appears.
2. Type `idisman` and press the Enter key on the keyboard. A small dialog box appears.
3. Move to **Automatic Shutdown**, and check the box to shutdown the DVR when you end SmartGuard. If this box is not checked, the DVR will enter the Windows mode via the SmartShell when shutting down SmartGuard.
4. You can save your changes by clicking the **OK** button. Selecting **Cancel** exits the dialog box without saving the changes.

**CAUTION:** Do NOT change other options and keep the factory default setting. Ask your system administrator about other options in the hidden dialog box.

### How to Access Windows

If you release the Automatic Shutdown mode in the hidden dialog box, clicking the **POWER** button in the SmartGuard mode causes the DVR to enter the SmartShell mode. Click the right mouse button in the SmartShell mode. The following Menu dialog box appears.



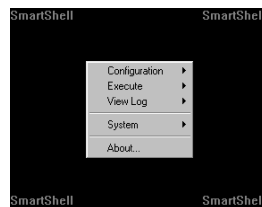
Click **System** to open options, and select **Close**. The DVR will enter the Windows mode. To return to the DVR programs, click the **Start** button on the Task Bar, move the cursor to **Programs**, and then to **DVR** to open the program list. Select **SmartShell**. The DVR will enter the SmartGuard mode via the SmartShell.

## Appendix 2 — SmartShell

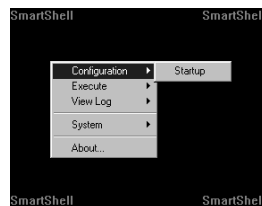
SmartShell is very easy and dependable software for maintaining your DVR. The software will help the DVR recover from unexpected system failures. SmartShell is also the only way to access Windows.

### How to Access SmartShell

If you release the automatic shutdown mode in the hidden dialog box, clicking the **POWER** button in the SmartGuard mode enters the SmartShell mode. Click the right mouse button in the SmartShell mode. The following Menu dialog box appears.

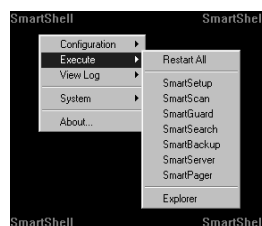


### Configuration Menu



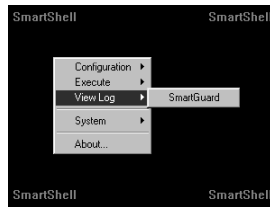
- **Startup:** Configures the startup programs of the DVR.

### Execute Menu



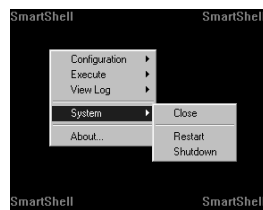
- **Restart All:** Restarts the programs.
- **SmartSetup:** Enters the SmartSetup program to set up the IBank, the database of the DVR. Ask your system administrator for details about the IBanks setup.
- **SmartScan:** This is invisible software that scans the hard disk drive for recording.
- **SmartGuard:** Enters the SmartGuard program.
- **SmartSearch:** Enters the SmartSearch program.
- **SmartBackup:** Enters the SmartSearch program.
- **SmartServer:** This is invisible software that prepares images for transmitting to remote sites via modem or LAN.
- **SmartPager:** Enters the SmartPager program to set up the pager function.
- **Explorer:** Initiates Explorer without accessing Windows.

## View Log Menu



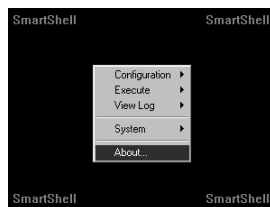
- **SmartGuard:** Displays the log file that logs every operation of the DVR.

## System Menu



- **Close:** Closes SmartShell and accesses Windows.
- **Restart:** Restarts the DVR.
- **Shutdown:** Shuts down the DVR.

## About... Menu

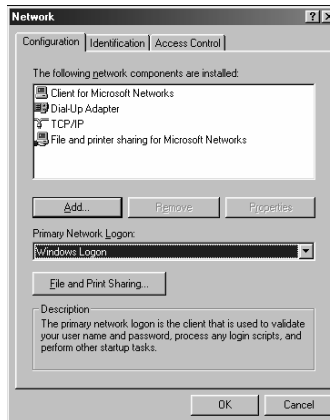


- **About...:** Displays the software version information.

## Appendix 3 — Network Setup (LAN)

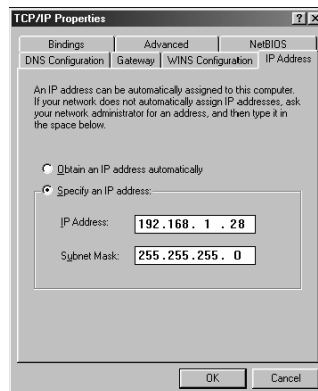
### LAN Setup for Windows 98 System

1. In the Windows mode, click **Start** on the Task Bar, move to **Control Panel**, and then to **Network**.

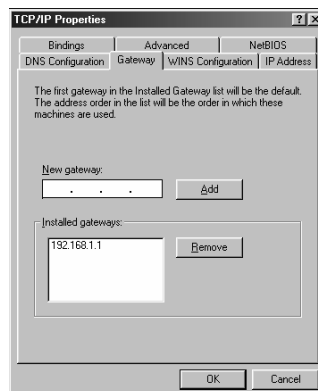


2. Under the **Configuration** tab in the **Network** dialog box, move to **Primary Network Logon** and select **Windows Logon** from the drop-down list. click **TCP/IP** in the list of network components, and then click the **Properties** button below.

**NOTE:** If *TCP/IP* is not listed, click the *Add...* button. In *Select Network Component Type* dialog box, select *Protocol* from the list of network component types and click the *Add...* button. In the *Select Network Protocol* dialog box, select *Microsoft* for the Manufacturer and *TCP/IP* for the Network Protocols. You can save your changes by clicking the *OK* button. Selecting *Cancel* exits the dialog box without saving the changes.



3. Under the **IP Address** tab, click the **Specify an IP address** radio button. And enter the **IP Address** and **Subnet Mask** acquired from your network administrator.



4. Move to the **Gateway** tab, and enter the gateway address acquired from your network administrator in the text field under **New gateway**, and then click the **Add** button. You can save your changes by clicking the **OK** button. If you select **OK**, you might need to allow the DVR to reboot. Selecting **Cancel** exits the dialog box without saving the changes.

## LAN Setup for Windows XP System

1. In the Windows mode, go to Start on the Task Bar, and to the Control Panel. Then, open the **Network Connection**.
2. Click the LAN card information under the **LAN or High-Speed Internet**. Then, click the right mouse button, and select **Properties** from the menu.



3. Check the **Internet Protocol (TCP/IP)** box, and click the **Properties** button.



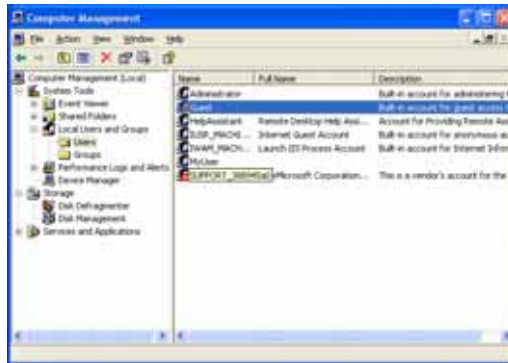
4. Click the **Use the following IP address** radio button. Enter the **IP address**, **Subnet mask**, and **Default gateway** acquired from your network administrator. You can save your changes by clicking the **OK** button. Selecting **Cancel** exits the dialog box without saving the changes.

## Appendix 4 — Network Setup (Modem)

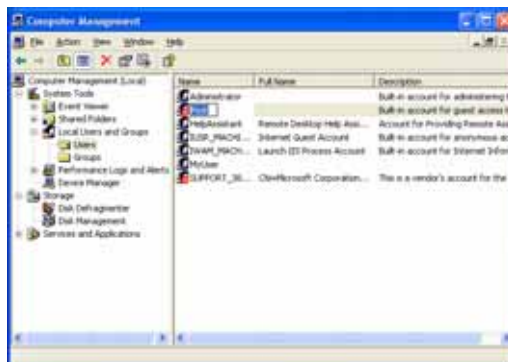
### Dial-up Networking Setup for Windows XP POST System

#### 1. Dial-up Networking Setup for Remote Access

- 1.1 In the Windows mode, go to **Start** on the Task Bar, and to **Control panel**. Then, open **Administrative Tools**, and double click **Computer Manager**.



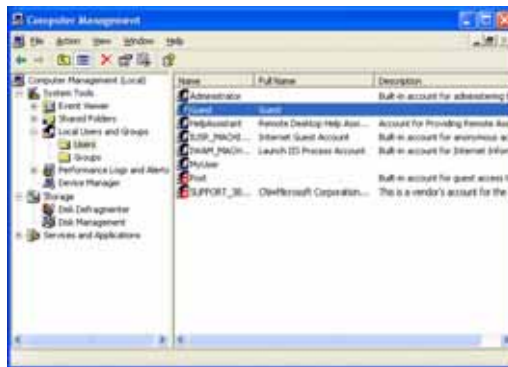
- 1.2 Under **Computer Management (Local)**, select **System Tools**, and **Local Users and Groups** and then **Users**. Move to **Guest** described as **Built-in account for guest access to the computer/domain**, and select **Rename** by clicking the right mouse button on the **Guest**.



- 1.3 Enter **"Post"**. Then go to the pull-down menu **Action**, and select the **New User**.



- 1.4 Enter "Guest" for the User name, and "1" for the Password and Confirm password. Check the User cannot change password box and Password never expires box, and then click the Create button.



- 1.5 Make sure that Guest user is created.

- 1.6 In the Windows mode, go to Start on the Task Bar, and to Control panel. Then, open Network Connection. Double click Create a new connection. The Location Information dialog box can appear when you set up dial-up networking first after installing the modem. If the following dialog box does not appear, move to step 1.8.



- 1.7 Complete the information about your current location, and click the OK button.



- 1.8 Select the location from which you are dialing, and click the OK button. The New Connection Wizard dialog box appears.



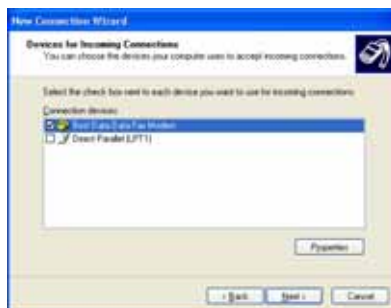
1.9 Click the OK button.



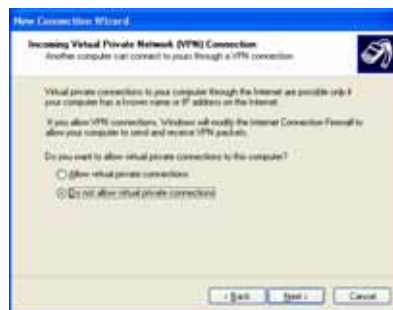
1.10 Select Set up an advanced connection, and click the Next button.



1.11 Select Accept incoming connections, and click the Next button.



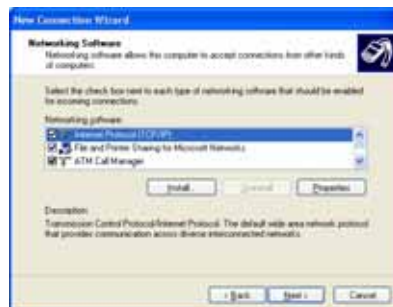
1.12 Select the modem you want to use, and click the Next button.



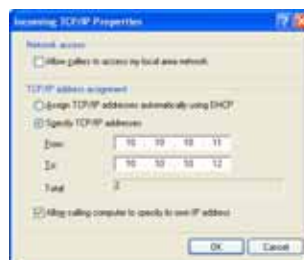
1.13 Select Do not allow virtual private connections, and click the Next button.



1.14 Check the Guest box for the user permission, and click the Next button.



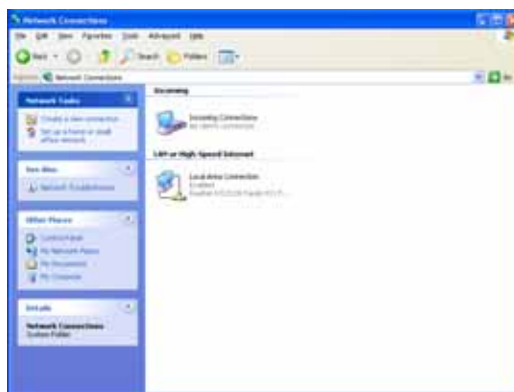
1.15 Check the Internet Protocol (TCP/IP) box, and click the Properties button.



1.16 Under the Network access, remove the check from the Allow callers to access my local area network box. Under the TCP/IP address assignment, click the Specify TCP/IP addresses radio box, and enter the From as "10.10.10.11", and the To as "10.10.10.12". And then check the Allow calling computer to specify its own IP address box. Click the OK button to save the changes and return to the previous dialog box. Click the Next button in the New Connection Wizard dialog box.



1.17 Finish the network connection wizard by clicking the Finish button.



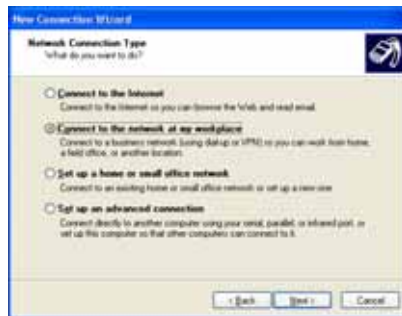
1.18 Make sure that Incoming Connections has been registered.

## 2. Dial-up Networking Setup for Callback Function

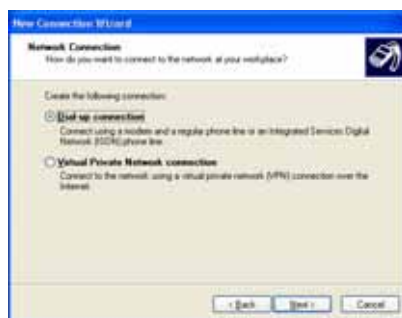
2.1 In the Windows mode, go to Start on the Task Bar, and to the Control panel. Then, open Network Connection. Double click Create a new connection.



2.2 Click the Next button.



2.3 Click the Connect to the network at my workplace radio box, and click the Next button.



2.4 Click the Dial-up connection radio box, and click the Next button.



2.5 Enter "My Network" for the Connection Name, and click the Next button.



2.6 Click the Next button without any changes.

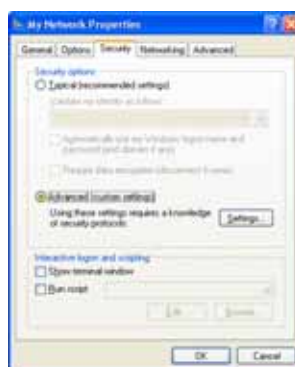


2.7 Finish the network connection wizard by clicking the Finish button.

2.8 Select My Network in the Network Connections dialog box.



2.9 Click the Properties button.



2.10 Move to the Security tab, and click the Advanced [custom settings] radio button under Security options. Then click the Settings button.



2.11 Check the Allow older MS-CHAP version for Windows 95 servers box, and click the OK button.



2.12 Move to the Networking tab, and select PPP: Windows 95/98/NT4/2000 Internet for the dial-up server type. Then, check the Internet Protocol (TCP/IP) box, and click the Properties button.



2.13 Click the Use the following IP address radio box, and enter the independent IP address starting from "10.10.10.20". Then, click the OK button.

**NOTE:** The same callback IP address entered above should be entered during *Remote Monitoring* setup on the BASE system. The independent IP address used to identify the DVR system is needed to set up the various dial-up networking for the POST systems.

## Dial-up Networking Setup for Windows 98 BASE System

### 1. Dial-up Networking Setup for Remote Access

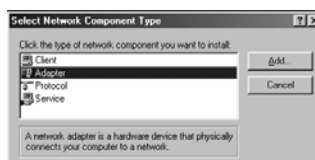
- 1.1 In the Windows mode, go to **Start** on the Task Bar, to **Programs**, to **Accessories**, and to **Communications**. If **Dial-up Networking** is listed, go to step 1.2.

**NOTE:** If **Dial-up Networking** is not listed, go to **Start** on the Task Bar, to **Control Panel**, to **Add/Remove Programs** and to *Windows Setup*. Check the *Communications* box and then click the *Details...* button below. In the *Communications* dialog box, check the *Dial-Up Networking* box and the *Dial-Up Server* box, and then click the *OK* button. Follow the *Windows* instructions for installing the necessary software. You can save your changes by clicking the *OK* button. Selecting *Cancel* exits the dialog box without saving the changes.

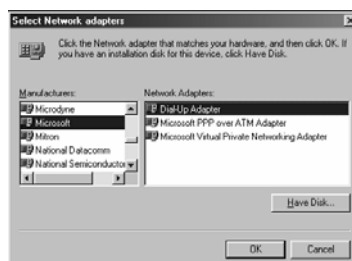
- 1.2 In the Windows mode, go to **Start** on the Task Bar, to **Control Panel**, and to **Network**.



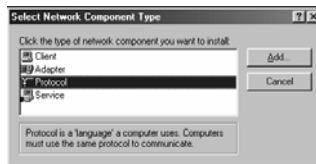
- 1.3 Under the *Configuration* tab in the *Network* dialog box, move to **Primary Network Logon** and select **Windows Logon** from the drop-down list. Then, click the **Add...** button to set up the adapter and protocol.



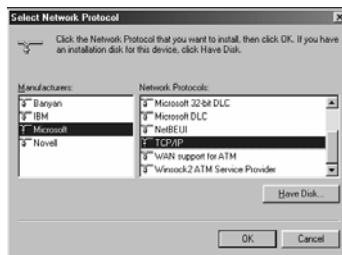
- 1.4 Click **Adaptor** and then click the **Add...** button.



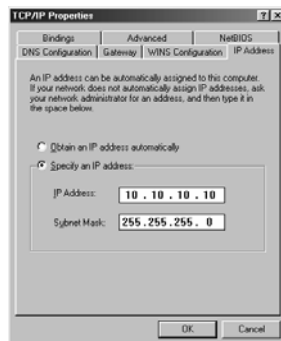
- 1.5 Click **Microsoft** from the **Manufacturers** and **Dial-Up Adaptor** for the **Network Adaptors**. Click the **OK** button to save the changes and return to the previous dialog box.



1.6 Click Protocol and click the Add... button.



1.7 Select Microsoft from the Manufacturers and TCP/IP for the Network Protocols. Click the OK button to save the changes and return to the Network dialog box. In the Network dialog box, click TCP/IP in the list of network components, and then click the Properties button below.



1.8 Under the IP Address tab, click the Specify an IP address radio button. Enter the IP address as "10.10.10.10" and the subnet mask as "255.255.255.0" in the text field beside IP Address and Subnet Mask. You can save your changes by clicking the OK button. If you select OK, you might need to allow the system to reboot. Selecting Cancel exits the dialog box without saving the changes.

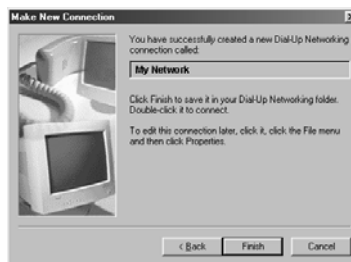
1.9 Open My computer on the desktop, and select Dial-Up Networking. Then, click Make New Connection. If Dial-Up Networking is not listed, return to step 1.1.



1.10 Enter "My Network" for the name of the POST DVR you are dialing, and select an installed modem from the drop-down list. Then, click the Next button.



- 1.11 Enter the telephone number of the POST DVR you want to call, and click the **Next** button. Make sure to enter any extra numbers such as 9 or area code that are necessary to dial out.



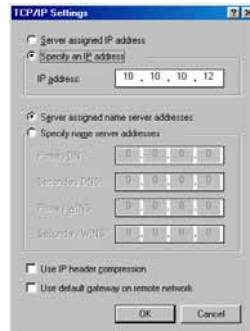
- 1.12 Click the **Finish** button. Then, click the newly created connection icon in the Dial-Up Networking window. Click the right mouse button, and move the cursor to **Properties** on the menu and click it.



- 1.13 Under the **General** tab, remove the check from the **Use area code and Dialing Properties** box when using an extension.



- 1.14 Move to the **Server Types** tab, and make sure that **PPP: Internet, Windows NT Server, Windows 98** is selected as the **Type of Dial-Up Server**. Do not check any box for the **Advanced options**. Check only the **TCP/IP** box, and do not check other boxes for the **Allowed network protocols**. And then click the **TCP/IP Settings...** button.

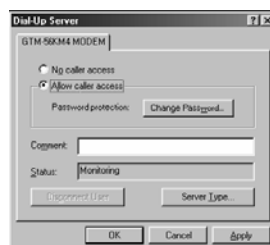


- 1.15 Click the **Specify an IP address** radio box, and enter "10.10.10.12". And then click the **OK** button. After you have changed the settings, you can save your changes by clicking the **OK** button. Selecting **Cancel** returns to the previous dialog box without saving the changes.
- 1.16 Double click the newly created connection icon, and try to connect.

## 2. Dial-up Networking Setup for Callback Function

**NOTE:** Follow the same procedures to set up the adaptor and protocol as used in steps 1.1 to 1.8 in the *Dial-up Networking Setup for Remote Access* section. Then, proceed to step 2.1 below.

- 2.1 Open **My computer** on the desktop, and select **Dial-up Networking**. Click the pull-down menu **Connection**, and move the cursor to **Dial-Up Server** and click it. If it is not listed, return to the step 1.1.



- 2.2 Click the **Allow caller access** radio box. Then, click the **Server Type...** button, and make sure that **PPP: Internet, Windows NT Server, Windows 98** is selected for **Type of Dial-Up Server**. Do not check any box for **Advanced options**. You can save your changes by clicking the **OK** button. Selecting **Cancel** returns to the previous dialog box without saving the changes.

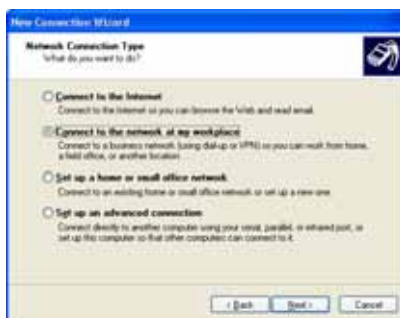
## Dial-up Networking Setup for Windows XP BASE System

### 1. Dial-up Networking Setup for Remote Access

- 1.1 In the Windows mode, go to Start on the Task Bar, and to the Control panel. Then, open Network Connection. Double click Create a new connection.



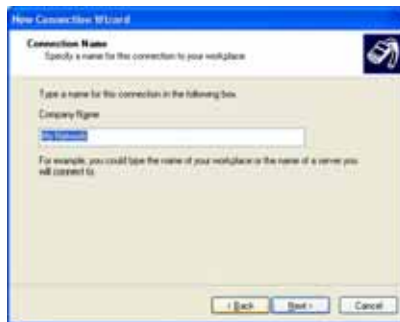
- 1.2 Click the Next button.



- 1.3 Click the Connect to the network at my workplace radio button, and click the Next button.



- 1.4 Click the Dial-up connection radio button, and click the Next button.



1.5 Enter “My Network” for the Connection Name, and click the Next button.



1.6 Do not enter any telephone number for the Phone number, and click the Next button.



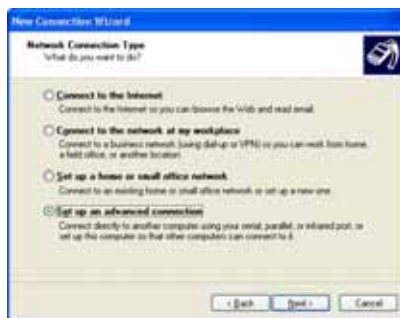
1.7 Click the Finish button. Double click the newly created connection icon after finishing the new connection wizard. The Connect Dial-up Connection dialog box appears. The instructions after this step are almost identical to Windows 2000. Go to step 1.7 in the Dial-up Networking Setup for Windows 2000 BASE system section, and follow the instructions.

## 2. Dial-up Networking Setup for Callback Function

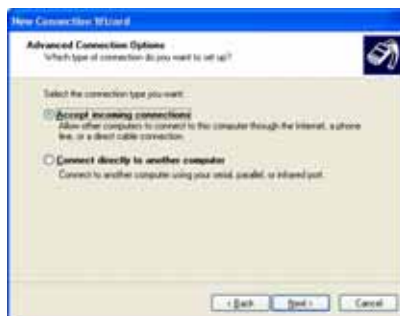
- 2.1 In the Windows mode, go to Start on the Task Bar, and to the Control panel. Then, open Network Connection. Double click Create a new connection.



- 2.2 Click the Next button.



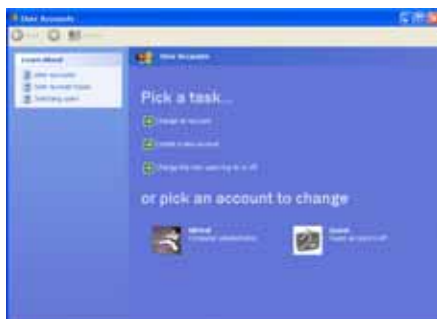
- 2.3 Click the Set up an advanced connection radio box, and click the Next button.



- 2.4 Click Accept incoming connections, and click the Next button. The instructions after this step are almost identical to Windows 2000. Go to step 2.3 in the Dial-up Networking Setup for Windows 2000 BASE system section, and follow the instructions.

### 3. Account Permission in Windows XP

3.1 In the Windows mode, go to **Start** on the Task Bar, and to the Control panel. Then, open the User Accounts.



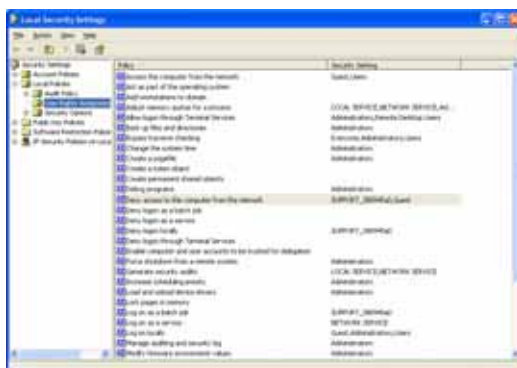
3.2 Click the Guest account icon if it displays Guest account is off.



3.3 Turn on the guest account by clicking the Turn On the Guest Account button.

**NOTE:** Following steps are for the Windows XP Professional.

3.4 Go to the Control Panel, and to the Administrative Tools. Then, open the Local Security Policy.



3.5 Go to the Security Settings, then to the Local Policies, and then to the User Rights Assignment. If there is "Guest" under the Deny access to this Computer from the network item, select the Properties after clicking the right mouse button on the target string to open its properties dialog box.

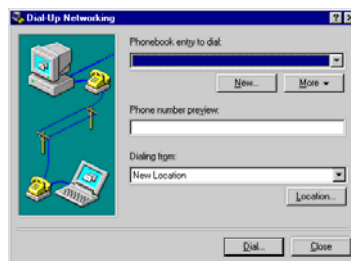


3.6 Permit the guest access by selecting the Guest and then clicking the Remove button.

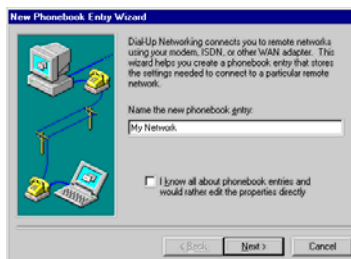
## Dial-up Networking Setup for Windows NT BASE System

### 1. Dial-up Networking Setup for Remote Access

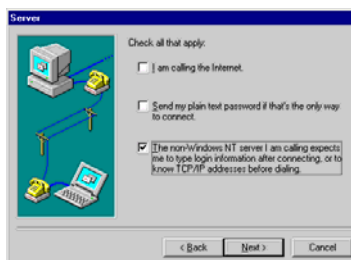
1.1 In the Windows mode, open My computer on the desktop and select Dial-Up Networking.



1.2 Click the New... button to add a phonebook entry to dial.



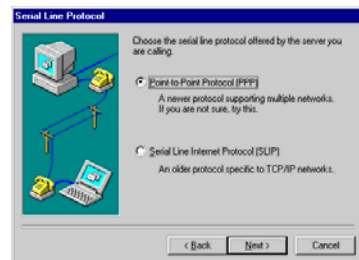
1.3 Enter "My Network" under Name the new phonebook entry, and click the Next button.



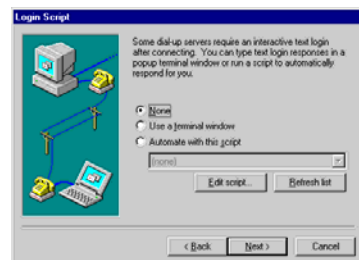
1.4 Check the third box, and click the Next button.



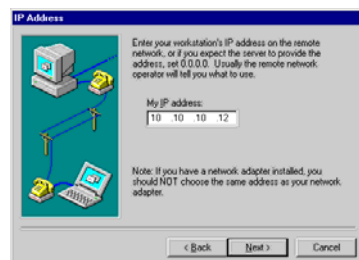
1.5 Do not enter any telephone number for the Phone number, and click the Next button.



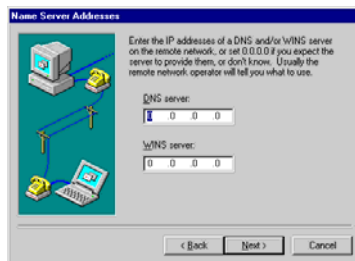
1.6 Click the Point-to-Point Protocol (PPP) radio box for the serial line protocol, and click the Next button.



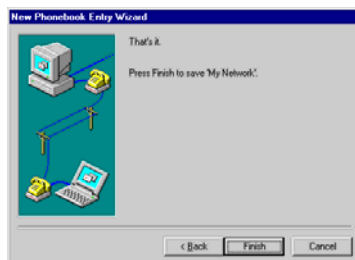
1.7 Do not change the default setting value (None). Click the Next button.



1.8 Enter "10.10.10.12" as My IP address, and click the Next button.



1.9 Do not change the default setting values for the Name Server Addresses, and click the **Next** button.



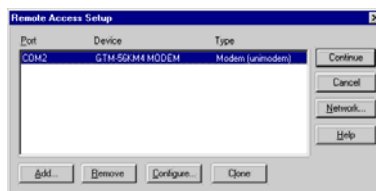
1.10 Finish the new phonebook entry, and close the dialog box by clicking the **Finish** button.

## 2. Dial-up Networking Setup for Callback Function

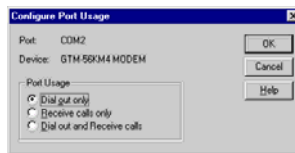
2.1 In the Windows mode, move the cursor on **Network Neighborhood** and click the right mouse button. Select **Properties** from the menu.



2.2 Move to the **Services** tab, and click **Remote Access Service**. Then, click the **Properties...** button. If there is no Remote Access Service, add it by clicking the **Add...** button.

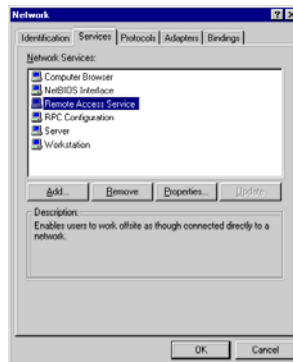


2.3 Select an installed modem to use for dial-up connection, and click the **Configure...** button.

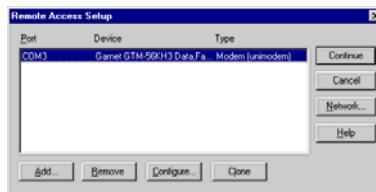


2.4 Click the **Dial out only** radio button for the port usage, and click the **OK** button.

2.5 In the Windows mode, move the cursor to **Network Neighborhood** and click the right mouse button. Select **Properties** from the menu. If there is no Remote Access Service, add it by clicking the **Add...** button.



2.6 Move to the **Services** tab, and click **Remote Access Service**. Then, click the **Properties...** button.



2.7 Select an installed modem to use for dial-up connection, and click the **Configure...** button.



2.8 Click the **Dial out and Receive calls** radio button for the port usage, and click the **OK** button to save the change and return to the **Remote Access Setup** dialog box. Then, click the **Network...** button in the **Remote Access Setup** dialog box.



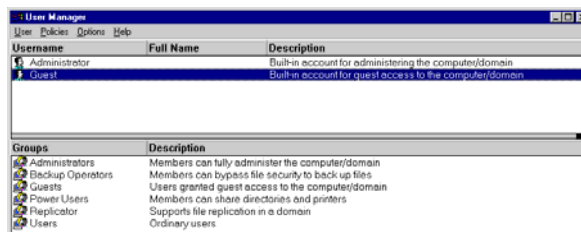
- 2.9 Check the TCP/IP box for Dial out Protocols, and check TCP/IP for Allow remote clients running. Then, click the Configure... button.



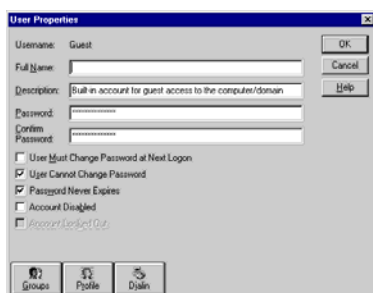
- 2.10 Click the Use static address pool radio button, and set the IP range from "10.10.10.10"(Begin) to the highest IP address(To) among the callback IP addresses set on the POST systems. Check the Allow remote client to request a predetermined IP address box, and then click the OK button.

**NOTE:** The callback IP address on the POST system must be within the IP range set above.

- 2.11 In the Windows mode, go to Start on the Task Bar, to Programs, to Administrative Tools (common) and to User Manager.

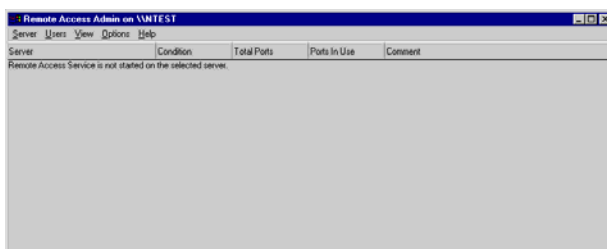


- 2.12 Double click Guest under the Username.

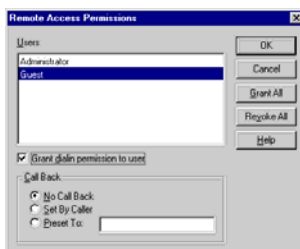


2.13 Remove the check from the Account Disabled box, and then click the OK button.

2.14 In the Windows mode, go to Start on the Task Bar, to Programs, to Administrative Tools (common) and to Remote Access Admin.



2.15 Click the Users pull-down menu, and select Permissions from the menu.

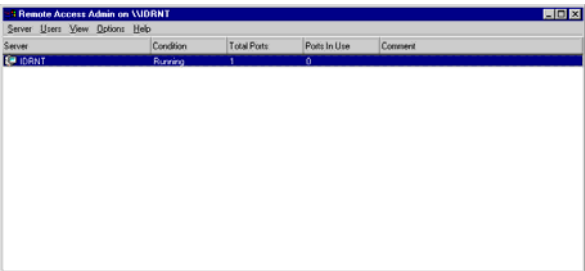


2.16 Select Guest for the Users, and check the Grant dialin permission to user box. Then, click the OK button to save the changes and return to the previous dialog box. Select Cancel to exit the dialog box without saving the changes.

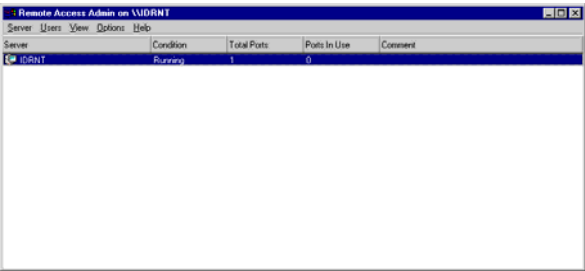
2.17 Click the Server pull-down menu in the Remote Access Admin dialog box, and select Start Remote Access Server from the menu.



2.18 Enter the server name, and then click the OK button.



2.19 Make sure that the Remote Access Server is running.



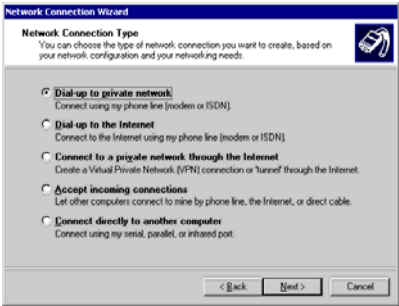
Dial-up Networking Setup for Windows 2000 BASE System

1. Dial-up Networking Setup for Remote Access

1.1 In the Windows mode, go to Start on the Task Bar, to Settings, and to Control panel. Then open the Network and Dial-up Connection. Double click Make New Connection.



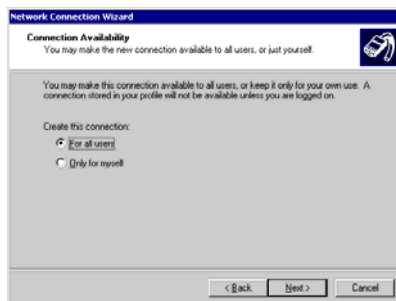
1.2 Click the Next button.



- 1.3 Click the Dial-up to private network radio button, and click the Next button.



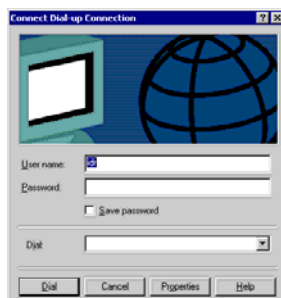
- 1.4 Do not enter any telephone number for the Phone number, and click the Next button.



- 1.5 You may make the dial-up connection available to all users, or keep it for your own use only. Click For all users or Only for myself, and click the Next button.



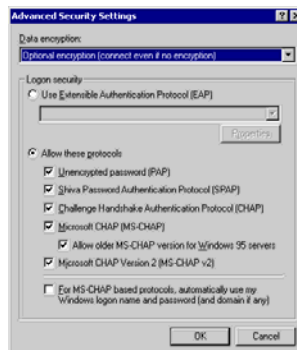
- 1.6 Enter "My Network" as the name for this connection, and click the Finish button. Double click the newly created connection icon after finishing the network connection wizard.



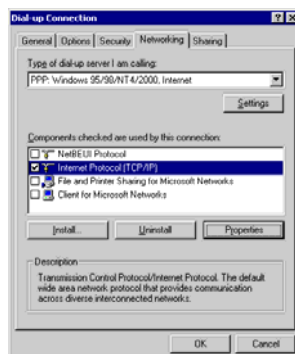
1.7 Click the Properties button.



1.8 Move to the Security tab, and click the Advanced [custom settings] radio button for the Security options. Then, click the Settings button.



1.9 Check the Allow older MS-CHAP version for Windows 95 servers box, and click the OK button.



1.10 Select PPP: Windows 95/98/NT4/2000, Internet from a drop-down list for the type of dial-up server, and click the Settings button. Remove the check from the Enable software compression box, and click the OK button to save the change and return to the Dial-up Connection dialog box.

1.11 Check the Internet Protocol(TCP/IP) box for the connection components, and click the Properties button.



- 1.12 Click the Use the following IP address radio button, and enter “10.10.10.12” as the IP address. Then click the OK button. After finishing all settings, open Connect Dial-up Connection by double clicking it. Enter “guest” for the User name, and click the Dial button to connect to the remote system.

## 2. Dial-up Networking Setup for Callback Function

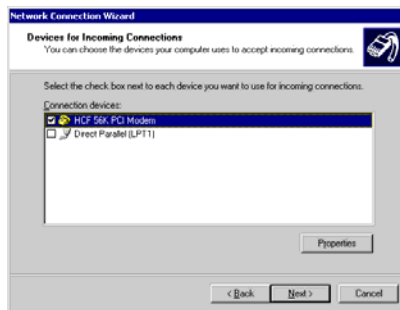
- 2.1 In the Windows mode, go to Start on the Task Bar, to Settings, and to Control panel. Then, open Network and Dial-up Connection. Double click Make New Connection.



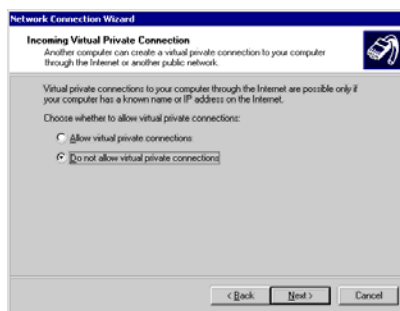
- 2.2 Click the Next button.



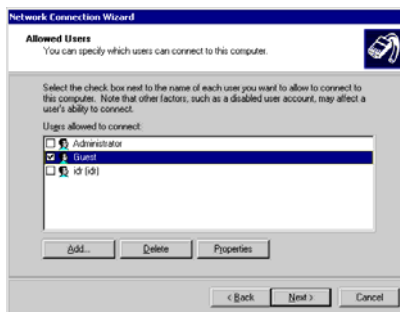
- 2.3 Click the Accept incoming connections radio box, and click the Next button.



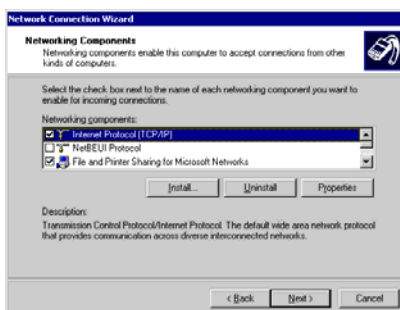
2.4 Select an installed modem to use, and click the Next button.



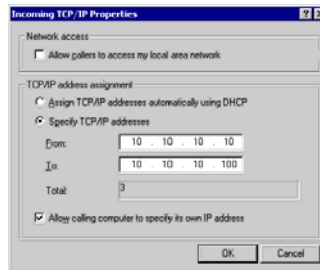
2.5 Click the Do not allow virtual private connections radio box, and click the Next button.



2.6 Check the Guest box for the users allowed to connect, and click the Next button.



- 2.7 Check only the Internet Protocol (TCP/IP) box. Do not check other boxes for the networking components. Then click the Properties button. If there is no Internet Protocol (TCP/IP) option, click the Install... button, and add it by selecting Protocol and clicking the Add button.



- 2.8 Click the Specify TCP/IP addresses radio box, and set the IP range from “10.10.10.10”(From) to the highest IP address(To) among the callback IP addresses set on the POST systems. Check the Allow calling computer to specify its own IP address box, and then click the OK button.

**NOTE:** The callback IP address on the POST system must be within the IP range set above.



- 2.9 Enter the name for the connection, and finish the network connection wizard by clicking the Finish button.

## Dial-Up Networking Troubleshooting

### **Problem: Dial-up networking disconnects in SmartGuard or in SmartSearch.**

Solution: Sometimes dial-up networking disconnects because of the condition of the modem or telephone lines. Close the DVR, access the Windows mode, and follow these instructions to test dial-up networking.

1. Go to My Network under Windows Explorer/Dial-Up Networking. Click the right mouse button and select Properties.
2. Under the General tab, make sure the correct modem is selected under Connect using.
3. Under the Server Types tab, make sure that PPP: Internet, Windows NT Server, Windows 98 is selected under Type of Dial-Up server box, and that the box next to TCP/IP is checked under Allowed network protocols. Then, click OK if everything is correct.
4. Double click My Network to open the dialog box. Enter the telephone number for the POST system and check if it is connected.
5. If the POST system is connected properly, try to access the remote site using SmartGuard or SmartSearch.

**NOTE:** Check the instructions again in Appendix 4 – Network Setup (Modem) if the POST system is not connected.

### **Problem: The error message *The line is busy* has appeared even though the POST system is not using the telephone.**

Solution: Sometimes Windows refuses the remote connection even when the telephone line is not busy. Try to connect again.

### **Problem: I cannot hear dial tone.**

Solution: Sometimes the modem cannot access a dial tone if your telephone is an extension. Follow the instructions below and then try to connect again.

1. Go to My Network under Windows Explorer/Dial-Up Networking, click the right mouse button and select Properties.
2. Click General/Configure/Connection tab.
3. Uncheck the box next to Wait for dial tone before dialing.

### **Problem: The POST system does not answer a telephone call.**

Solution: Under Windows Explorer/Dial-Up Networking, go to the pull-down menu Connection and then to Dial-Up Server. Check Allow caller access.

### **Problem: After the POST system receives calls, the network disconnects.**

Solution: Under Windows Explorer/Dial-Up Networking, go to the pull-down menu Connection and then to Dial-Up Server. Click Server Types... and check if PPP: Internet, Windows NT Server, Windows 98 is selected under Type of dial-Up Server.

### **Problem: The POST system calls back the BASE system, however the connection fails.**

Solution: Make sure that the dial-up networking is installed on the BASE system. If it is not installed, refer to the Appendix 4 – Network Setup (Modem) for the instructions on setting up the dial-up networking. If the connection fails although it is installed, make sure the IP address for dial-up connection of the BASE system is "10.10.10.10".

## Appendix 5 — WebGuard

### Overview

The WebGuard, remote web monitoring program, allows users to access the remote systems and monitor live video images on it through an Internet web browser any time from virtually anywhere.

### Features

- Remote monitoring live video images by using a web browser
- Accessing up to 16 remote systems
- 16-channel live monitoring
- Safe program with VeriSign authentication
- PTZ control and various image enhancement functions

### WebGuard Browser



- **Monitor:** Displays live video images transmitted in real-time from the remote site.
- **Power Button:** Quits the program
- **Title Bar:** Displays the ID or the title of the location where the remote system is installed.
- **Camera Button:** Selects a camera and displays the image of a target camera.

**NOTE:** The camera button illuminates when that camera is displayed on the screen.

- **Screen Button:** Every time this button is clicked, the screen mode switches (single-screen, quad, 3x3, and 4x4 modes).

**NOTE:** 1-4, 5-8, 9-12 or 13-16 camera groups are displayed on the screen in quad mode, and 1-9 or 10-16 camera groups in 3x3 mode. The user can select which camera group is displayed by clicking any camera button in a group.

- **PTZ Control Button:** Controls pan, tilt, zoom, iris and focus.
- **Screen Adjust Button:** Adjust brightness, contrast, hue and saturation.

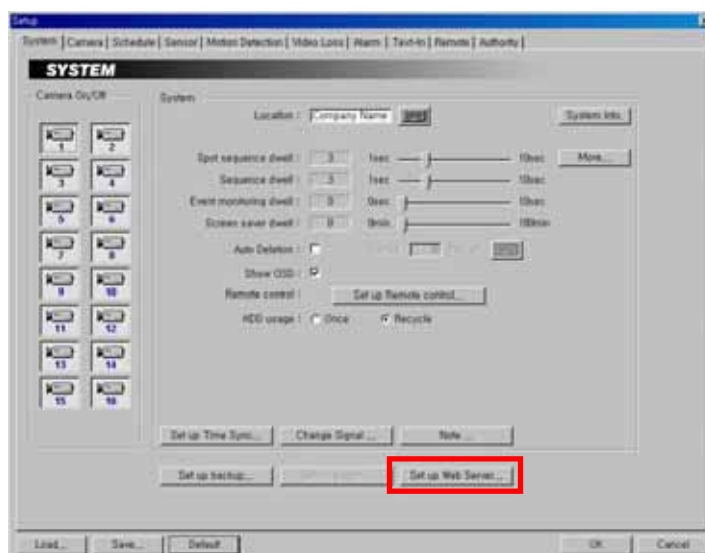
## How to connect WebGuard

Start the Web browser (Internet Explorer) in your local PC and enter the IP address of the DVR in the location/address field. Get the IP address from the network administrator. WebGuard runs automatically.

**NOTE:** WebGuard only works with Microsoft Internet Explorer and will NOT work with Netscape.

## Web Server Setup

The DVR includes a personal web server. If you do not want to run a web server, turn it off by clicking the **Set up Web Server...** button under the **System** tab of the **Setup** dialog box in the SmartGuard mode and follow the instructions.



## Appendix 6 — Protocol for Remote Controlling DVR

### Message Format

<BOM><ID>:<Class>:<Code>[:<Operands>]:<Checksum>[EOM]

where

Symbol	Value	Description
:	:	Field delimiter
<BOM>	@	Beginning of message (for command)
	<	Beginning of message (for reply)
<ID>	00~99	Device ID
<Class>	DR	Device Class ("DR" for DVR systems)
<Code>	AA~zz	Op-code (see below)
<Operands>		Optional operands defined for each operation
<Checksum>	00~99	Checksum (sum of ASCII codes before checksum discarding overflow) <sup>i</sup>
	*	No checksum
[EOM]	^J^M	End of message (optional: only for convenience of users using general terminal)

\*All digits are used in decimal format.

\*Letters are case sensitive.

### Control Flow

- Every transaction consists of one command and one reply.
- Characters transmitted before <BOM> are ignored.
- The format of operands is defined independently for each op-code.
- The <BOM> received before <Checksum> of the previous message resets interpretation: i.e., discards the previous message. EXCEPTION: in case of text input, none of characters within specified length has special interpretation.

### Common Reply

Reply code	Reply data	Description
ok		
er	0000~9999	Error: return error number

### General Functions

Function	Code	Operands <sup>ii</sup>	Reply	Reply data
Power Off	PO			
Time Setting	TM	YYYYMMDDHHMMSS <sup>iii</sup>		
Login	LI	01~16:****:01~08:****		
LogOut	LO			

### Cursor Control

Function	Code	Operands	Reply	Reply data
Tab	TB	F/B(direction)		
Enter	EN			
Text Input	TI	01~99(length):string <sup>iv</sup>		

## Multiplexer (Display/Audio) Functions

Function	Code	Operands	Reply	Reply data
Screen Format	SF	0~9 <sup>v</sup>		
Full Screen	FS	Y/N/T (on/off/toggle)		
Camera Selection	CS	00~99(camera)		
Spot Camera	SC	00~99(spot):00~99(camera)		
Spot Sequence	SS	00~99(spot):Y/N/T (on/off/toggle)		
Sequence	SQ	Y/N/T (on/off/toggle)		
Change OSD mode	OS	0~9(mode)		
Image Brightness	IB	+0/- (direction):Y/N(step)		
Image Contrast	IC	+0/- (direction):Y/N(step)		
Image Hue	IH	+0/- (direction):Y/N(step)		
Image Saturation	IS	+0/- (direction):Y/N(step)		
Image Default	ID			

## Recorder (Player) Functions

Function	Code	Operands	Reply	Reply data
Recording On/Off	RO	Y/N/T (on/off/toggle)		
Panic	PN	Y/N/T (on/off/toggle)		
Playback	PL	F/B(direction):1~9(speed)		
Playback (Still)	PS	A/Z/F/B/P/S <sup>vi</sup>		
Screen Mode (Search)	PM			
Show Search	PR			

## Alarm Functions

Function	Code	Operands	Reply	Reply data
Alarm Mute <sup>vii</sup>	AU	00~99/AA(id) <sup>viii</sup> :Y/N/T (on/off/toggle)		
Alarm Out <sup>ix</sup>	AO	00~99/AA(id)		
Alarm Reset <sup>x</sup>	AR	00~99/AA(id)		
Alarm In	AI	00~99/AA(id)		
Reset Event-Recording	RR	00~99/AA(id) <sup>xi</sup>		

## Telemetry Spot Control Functions

Function	Code	Operands	Reply	Reply data
Is spot cam was PTZ	SP	00:00~99(SpotID)	SP	00:Y/N
Spot PTZ NorthWest	SP	01:00~99(SpotID):Y/N(step)		
Spot PTZ North	SP	02:00~99(SpotID):Y/N(step)		
Spot PTZ NorthEast	SP	03:00~99(SpotID):Y/N(step)		
Spot PTZ West	SP	04:00~99(SpotID):Y/N(step)		
Spot PTZ East	SP	05:00~99(SpotID):Y/N(step)		
Spot PTZ SouthWest	SP	06:00~99(SpotID):Y/N(step)		
Spot PTZ South	SP	07:00~99(SpotID):Y/N(step)		
Spot PTZ SouthEast	SP	08:00~99(SpotID):Y/N(step)		
Spot PTZ Move Stop	SP	09:00~99(SpotID)		
Spot PTZ Zoom In	SP	10:00~15(SpotID):Y/N(step)		
Spot PTZ Zoom Out	SP	11:00~15(SpotID):Y/N(step)		
Spot PTZ Zoom Stop	SP	12:00~99(SpotID)		
Spot PTZ Iris Open	SP	13:00~99(SpotID):Y/N(step)		
Spot PTZ Iris Close	SP	14:00~99(SpotID):Y/N(step)		
Spot PTZ Iris Stop	SP	15:00~99(SpotID)		
Spot Select camera	SX	00:00-99(Spot ID):00-99(Camera)	SX	00:00-99(Camera)
Spot Toggle sequence	SX	01:00-99(Spot ID):Y/N/T	SX	01:YY(Sequence) /00-99(Camera)

## Getting Information from DVR

Function	Code	Operands	Reply	Reply data
Read Time	tm		tm	YYYYMMDDHHMMSS
Read Alarm In	ai		ai	01~99:00...~FF... (alarm data)
Read Alarm Out	ao		ao	01~99:00...~FF... (alarm data)
Read Disk Usage	du		du	000~100 <sup>xii</sup>
Read Recording	ro		ro	Y/N
Read Panic Recording	pr		pr	Y/N
Read Playback mode	pm		pm	S/P/</>/R/F <sup>xiii</sup>
Read Screen Format	sf		sf	0~9
Read Sequence	sq		sq	Y/N

## Error code

Error	Code
Unclassified error	0000
Unsupported command	0001

## Revision History

### May 5, 2003 (Version 1.2)

- Added ss command for getting the status of system
- Added ao command for getting the status of alarm out

### October 6, 2003 (Version 1.3)

- Added PX for specifying the speed at which PTZ moves
- Added PE for specifying the extended PTZ functions

### November 5, 2003 (Version 1.4)

- Change SC, SS command to have 2 digit number for specifying spot monitor.
- Added PA for auto pan, which is different from PE:52 in PE:52 can specify the type of auto pan.

### November 7, 2003 (Version 1.5)

- Add LI, LO, PM, PR commands.

<sup>i</sup> For DVR sample code for Checksum is followed.

```
int GetChecksum(char *msg, int len)
{
    DWORD sum = 0;
    BYTE *p = (BYTE*)msg;
    while (len > 0) {
        sum += DWORD(*p++);
        len--;
    }
    return int(sum%100);
}

void AddChecksum(char* msg)
{
    int len = strlen(msg);
    int checksum = GetChecksum(msg, len);
    sprintf(msg+len, "%02d", checksum);
}
```

<sup>ii</sup> Notation:

- (..): explanation only: do not include in the message.
- /: single selection from list of possible symbols.
- ~: for interval.
- ...: the length is not fixed but determined by preceding operand

<sup>iii</sup> Only 24hour format is supported: ex) 20000603135030

<sup>iv</sup> The text can include special characters.

<sup>v</sup> Next(0), Full(1), 2x2(2), 3+4(3), 3x3(4), 2+8(5), 1+12(6), 4x4(7), PIP(8)

<sup>vi</sup> A/Z/F/B/P/S: first, last, forward, backward, pause, stop

<sup>vii</sup> Alarm Mute : alarm out is off while Alarm Mute is on regardless of alarm status

<sup>viii</sup> 00~99/AA(id) : 00~99 for each alarm, or AA for all alarms

<sup>ix</sup> Alarm Out: generate alarm out, which is automatically turned off after the programmed dwell time

<sup>x</sup> Alarm Reset: clear alarm out

<sup>xi</sup> Reset Event-Recording: resets event-driven recording associated with alarm-in of the given id.

<sup>xii</sup> Percentage

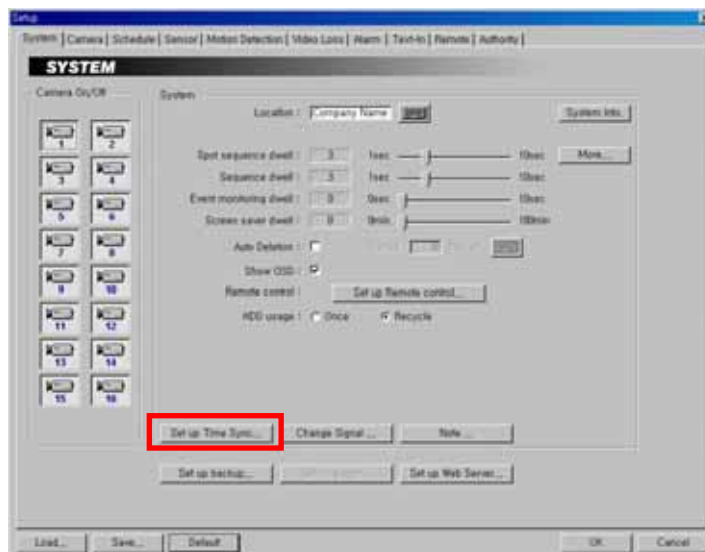
<sup>xiii</sup> S/P/</>R/F : stop/pause/backward playback/forward playback/rewind/fast forward

## Appendix 7 — Time Synchronization

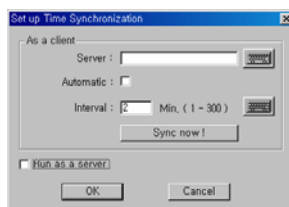
In general, each DVR system may have a different time because of the accuracy of its internal clock. The Time Synchronization function synchronizes the time between POST systems and any time server when they are networked. Any POST system or BASE system can run as a time server. Also you can use a standard time server provided by each country.

**NOTE:** Visit <http://www.eecis.udel.edu/~mills/ntp/clock1.htm> for finding a standard time server.

### SmartGuard Setup – System



Click the Set up Time Sync... button.



Move to **Server**, and enter the IP address of target time server. If you want to synchronize the time between the POST system and a time server automatically, check the **Automatic** box; otherwise, synchronize the time manually by clicking the **Sync now...** button. The user can set up the synchronization interval from 1 to 300 minutes.

**NOTE:** When selecting *Automatic* (automatic time synchronization), the system time will synchronize with the server time at a fixed time every hour. If there is more than a 0.5 second gap between the system and the server, the system time will be changed, and the event will be recorded on the system log if there is more than a 1.0 second gap.

Check the **Run as a server** box when you want the DVR to run as a time server.

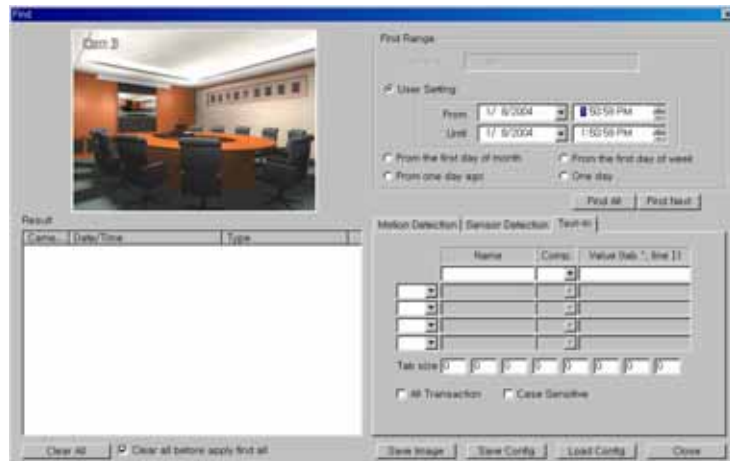


Click the **Get Time** button to display the time information of the target server, and click the **Fix Now** button to change the system time to the server time. If the server time is earlier than the current DVR time, you must delete images dated later than the server time. If you do not delete images, the time cannot be reset.

**NOTE:** When setting up time synchronization for the first time, set the time between the system and the time server manually because the system and the server might have wide time gap.

## Appendix 8 — Text-In Query

### Finding Text-In



Set up the find condition of text-in.

- **Name:** Enter the text to find.
- **Comp:** Enter the comparison operator.
- **Value:** Enter the comparison value.

**NOTE:** The tab and line can be used for more specific search of the text-in data. Use a symbol '^' indicating the location of each individual category, and ']' indicating the line where the category is located. See the following examples for details.

- **Tab size:** Enter the tab size. Up to eight tabs can be set.
- **All Transaction:** Check this box to find all transaction results within established find conditions.
- **Case Sensitive:** Check this box to distinguish between capital letter and small letters entered in the **Name** box.

### Query Example I

1 2 3 4 5 6  
123456789012345678901234567890123456789012345678901234567890

Item	Unit price	Qty	amount
Coke	\$ 2.20	1(s)	\$ 2.20
Fanta	\$ 2.20	1(s)	\$ 2.20
Hotdog	\$ 3.50	3(s)	\$ 10.50
Pepsi	\$ 1.95	1(s)	\$ 1.95
total : \$			16.85

Thank you~~

In the above text-in data, you can find that the comparison value is located at 17<sup>th</sup> (Unit price, \$ mark will be ignored automatically), 28<sup>th</sup> (Qty) and 40<sup>th</sup> (amount) characters (including spaces) from the left. In this case, you can enter "17", "28" and "40" in each Tab size box, and enter the tab symbol "^" in the Value box (^ for Unit price, ^^ for Qty, and ^^ for amount).

For example, if you want to search for Coke with a Qty(Quantity) of more than 1 and Hotdog with an amount totaling over \$8, the following find condition can be set.

```

and      Coke      >      ^^1
        Hotdog     >      ^^^8

```

### Query Example II

```

          1          2          3          4          5          6
123456789012345678901234567890123456789012345678901234567890

```

Item	Unit price	Qty	amount
Coke	\$ 2.20	1(s)	\$ 2.20
Fanta	\$ 2.20	1(s)	\$ 2.20
Hotdog	\$ 3.50	3(s)	\$ 10.50
Pepsi	\$ 1.95	1(s)	\$ 1.95
total : \$			16.85

Thank you~~

In the above text-in data, you can find that the comparison value is located at 17<sup>th</sup> (Unit price, \$ mark will be ignored automatically), 28<sup>th</sup> (Qty) and 40<sup>th</sup> (amount) characters (including spaces) from the left, but the value of amount category is located at the different line from Item. In this case, you can enter “17”, “28” and “40” in each Tab size box, and enter the tab symbol “^” and line symbol “]” in the Value box (^ for Unit price, ^^ for Qty, and ^^^ for amount / ] for the next line).

For example, if you want to search for Coke with a Qty(Quantity) of more than 1 and Hotdog with an amount totaling over \$8, the following find condition can be set.

```

and      Coke      >      ^^1
        Hotdog     >      ]^^^8

```

## Appendix 9 — Troubleshooting

Following are some frequent problems and solutions related to the DVR. Read this section before calling the dealer or installer.

**Problem: There is no image on the screen.**

**Solution:** Check the camera cables. If the background of the DVR system is blue, something is wrong with the camera cable or power.

**Problem: How do I access Windows?**

**Solution:** To protect unnecessary system crashes, Windows is blocked. See Appendix 1 – Accessing Windows.

**Problem: I have upgraded the software. How do I reinstall it?**

**Solution:** There are three steps to reinstall the software.

1. Uninstall the old version.
  - Go to My Computer. Select Control Panels and the Add/Delete program, and then select the DVR model.
  - The Delete button will be activated. Click Delete.
2. Scan the hard disk with the System tools under Programs/Accessories in Windows.
3. Install the new software.

**Problem: The IDIS logo appears and then freezes. Sometimes the screen is black.**

**Solution:** There is a problem with the Main Board. Reboot the DVR. If it happens often, call your dealer or installer.

**Problem: The *Display setup is not correct* error message appears and opens up in the Windows mode when OK is clicked.**

**Solution:** The DVR requires 1024x768 resolution and true color. This message will be printed on the screen when the requirements are not met. Access Display Setup and change the values for the DVR and then reboot the system.

**Problem: I am trying to change the display setup, but I cannot choose True color. The resolution keeps jumping to a lower value.**

**Solution:** Some VGA cards require a few steps. Set up the resolution first. Do not worry about the color palette. Then access Display Setup and choose True color. If it happens again, the VGA card does not support the 1024x768 resolution and True color. Change the VGA card.

**Problem: The USB-serial converter has been connected to the DVR for the POS installation, however, the dialog box asking the device driver appears.**

**Solution:** When connecting the POS device to the DVR using the USB-serial converter, connect the converter while the DVR is operating. If not, the converter driver may not be operating properly and display the dialog box asking the device driver during the system boot. However, it does not have any effect on the DVR operation. Remove the converter, and reboot the DVR and then connect the converter again.

## Appendix 10 — Specifications

VIDEO	
Signal Format	NTSC or PAL (programmable)
Video Input	Composite: 16 inputs, 1 Vp-p, selectable 75 Ohms or high-z termination
Monitor Outputs	Composite: One, 1 Vp-p, 75 Ohms VGA: One
Recording Resolution	640x480, 640x240, 320x240, 160x120
Display / Record Speed (images per second)	Max. 120ips / 120ips (100ips / 100ips for PAL)
INPUTS/OUTPUTS	
Alarm Input	16 switch closure or TTL open-collector
Alarm Output	1 relay
Audio Input	One, "line in" or "mic" programmable
Audio Output	One, "line"
CONNECTORS	
Video Input	Composite: 16 BNC
Monitor Output	Composite: 1 BNC VGA: 1 VGA*
Audio In	Line in or microphone in
Audio Out	One line out
Alarms	Terminal block
Ethernet Port	RJ-45
RS232 Serial Port	DB9 (P)
USB Port	Six USB connectors**
Parallel Port	25 (P) D-Sub
STORAGE	
Primary Storage	EIDE hard disk drives (up to 3)
Secondary Storage	External USB hard disk drives
Backup Storage	Internal CD-RW
GENERAL	
Dimensions (W x H x D)	17.3" x 7.0" x 18.9" (440mm x 180mm x 462mm)
Unit Weight	32.8 lbs. (14.9kg)
Shipping Weight	43.2 lbs. (19.6kg)
Shipping Dimensions (W x H x D)	23.2" x 13.4" x 27.6" (590mm x 340mm x 700mm)
Power	100 – 127V ~ 6A, 200 – 240V ~ 3A, 60/50Hz
MISCELLANEOUS	
System Configuration	Operating System: Windows XPE CPU: Intel Celeron Slot: 1 VGA Card (AGP Slot) 1 x016S Capture Card (PCI Slot)
Approvals	FCC, CE, UL

\* Do NOT use a blocked S-Video connector on the VGA card.

\*\* Windows may not operate properly when using the USB connectors on the front panel, depending on the model type. In this case, use the USB connectors located on the rear panel.

Specifications are subject to change without notice.